
SATO Label Gallery TruePro

GalleryMemMaster

SATO International Pte Ltd

English Edition

Version SI-040603-06

Copyright © 2004-2005 SATO International Pte Ltd
All rights reserved.

Contents

1. About GalleryMemMaster	1-1
1.1 Introduction.....	1-1
2. Introduction	2-1
2.1 Overview	2-1
2.2 Main Window.....	2-1
2.3 Pull down menus	2-1
2.4 Toolbar	2-1
2.5 Memory card slot selection	2-2
2.6 Fonts and Graphics list box.....	2-2
2.7 Preview area.....	2-3
2.8 Status line.....	2-3
3. Reference	3-1
3.1 Card 3-1	
3.1.1 New	3-1
3.1.2 Open.....	3-1
3.1.3 Save As	3-1
3.1.4 Close.....	3-2
3.1.5 Memory Card Information.....	3-2
3.1.6 Printer Selection	3-3
3.1.7 Format.....	3-3
3.1.8 Reload memory card	3-3
3.1.9 Download All	3-3
3.1.10 Status Print	3-3
3.1.11 Exit	3-3
3.2 View 3-4	
3.3 Fonts 3-4	
3.3.1 Add.....	3-4
3.3.2 Delete.....	3-5
3.3.3 Download.....	3-5
3.3.4 Remove.....	3-5
3.3.5 Edit	3-5
3.3.6 Test print	3-7
3.4 Graphics.....	3-7

3.4.1 Add.....	3-7
3.4.2 Delete	3-8
3.4.3 Download.....	3-8
3.4.4 Remove.....	3-8
3.4.5 Edit	3-8
3.4.6 Test print	3-8
3.5 Settings	3-8
3.5.1 Properties	3-8
3.6 Tools	3-9
3.7 Help	3-9
3.7.1 Contents	3-10
3.7.2 Label Gallery on the web	3-10
3.7.3 About.....	3-10
3.7.4 Missing Help Topic	3-10

1. About GalleryMemMaster

1.1 Introduction

GalleryMemMaster is software dedicated to preparing and downloading TrueType fonts and graphics to printer memory cards. Graphics and fonts downloaded to printer's memory card are treated as internal printer object. This enables much faster printing, because there is no need to transfer whole bitmap image of graphics or text to the printer.

MemMaster can:

- Add, edit and view data, prepared for download on memory cards.
- Check the available memory card space before down-loading.
- Share information about the contents of the memory card between MemMaster and Label Gallery.
- Print the down-loaded data from the memory card.

MemMaster is Windows based program with a user-friendly and intuitive graphic interface.

Conventions used in this Manual

- Text that appears in bold letters refers to the names of the menus, buttons and other 'clickable' things like **OK** button.
- Text that appears in italic refers to the options and confirming actions - like *Read only*.

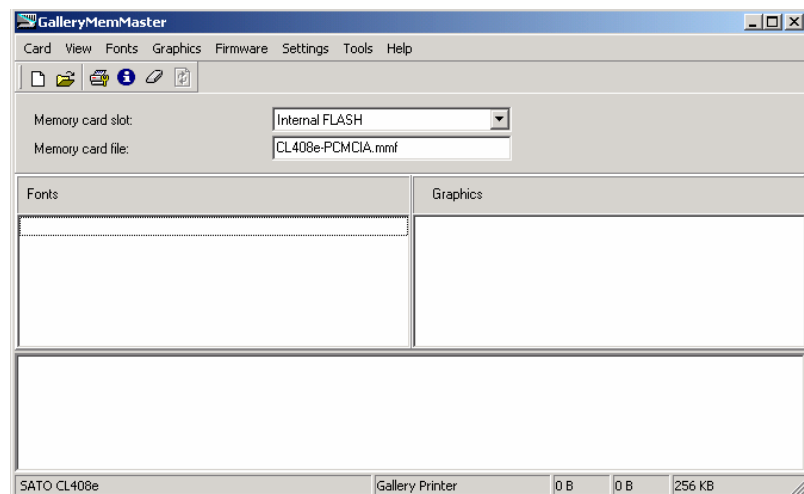
- Text enclosed in brackets refers to keys from PC keyboard - like <Enter>

2. Introduction

2.1 Overview

This section will briefly describe the working area of GalleryMemMaster application. Detailed description of each menu and its commands is in the next chapter.

2.2 Main Window









MemMaster main window

2.3 Pull down menus

All actions can be achieved by using pull-down menus. Read more about menus in following sections of this manual.

2.4 Toolbar

These are the buttons in the Toolbar.

-  Shortcut to New memory card. Same as selecting **Card/New**.
-  Shortcut to Open memory card. Same as selecting **Card/Open**.
-  Shortcut to *Printer setup* dialog. Same as selecting **Card/Printer selection** menu.
-  Shortcut to *Memory Card Information* dialog. Same as selecting **Card/Memory Card Information** menu.
-  Format (erase) memory card. Same as selecting **Card/Format** menu.
-  Shortcut to **Reload memory card** command. Same as selecting **Card/Reload memory card**.

2.5 Memory card slot selection


Under the toolbar you can select the memory card slot for the current printer.



Note, every memory slot must have its own memory card file. The memory card file name connected to currently selected memory slot is displayed to the right.

2.6 Fonts and Graphics list box

All currently selected fonts and graphics are shown in these two list boxes. You can access pop up menu by pressing right mouse button. Popup menu contains the same commands as corresponding main menu (**F**onts or **G**raphics).

If there is an  icon displayed in front of a font or graphics name, that font or graphic is downloaded to the memory card.

2.7 Preview area

In preview area you can review selected font or graphic files. On left side you can see basic dimensions and memory size of selected object (font or graphics).

2.8 Status line

In status line you can see which the currently selected printer is. In the following fields there is information about size of selected and downloaded objects (fonts and graphics). In the following field there is memory card size. In last field there is information about current mode of selected printer. You can download fonts and graphics only to supported printers.

3. Reference

3.1 Card

The commands under **Card** menu lets you set up printer and its options, attach files to available memory card slots, change memory card settings and test print.

3.1.1 New

Creates a new memory card file. First you are prompted to name the memory card file and save it in a directory of your choice.

Note that the memory card file you create will be connected to currently selected memory slot. So, for every memory slot in printer, a different memory card file can exist. Make sure, you have the correct printer (**Printer Selection** command) and memory slot selected before you issue this command. If the printer doesn't support memory cards, this command will be disabled.

Then the **Memory Card information** command is automatically executed, allowing you to specify the description and memory card size.

3.1.2 Open

Opens existing memory cards file and connect it to the currently active memory slot.

3.1.3 Save As

Saves current memory card file under a new name.

Note that once you create the memory file, all changes you make are automatically saved, so this command is

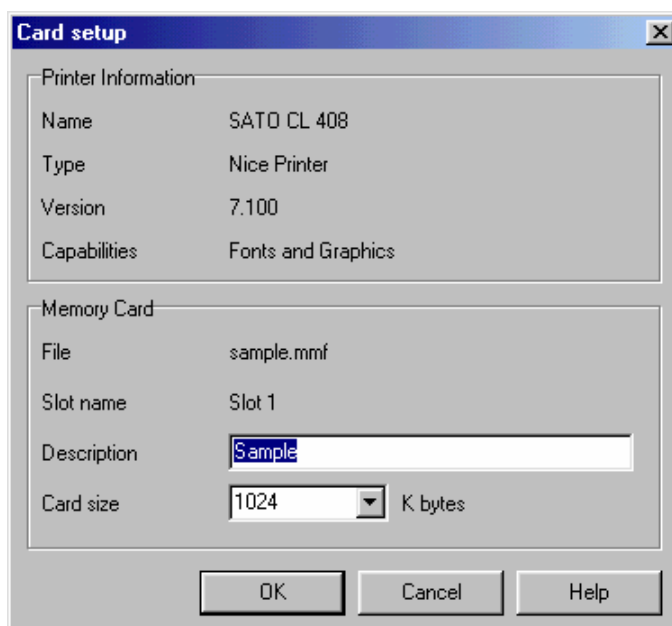
only used to make a copy of an existing memory card file.

3.1.4 Close

Closes current memory card file.

3.1.5 Memory Card Information

In this dialog you change settings, which concerns only memory card in currently selected memory slot.



MemMaster Card Setup dialog box

Printer information

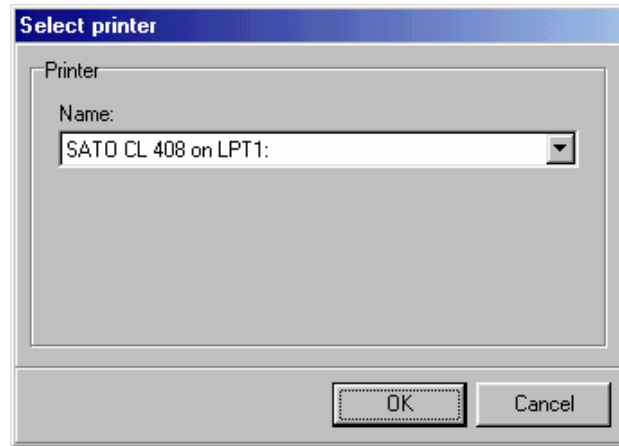
In this first section you can find more information about currently selected printer. **Type** field will inform you if printer can switch to mode in which you can then download data to memory card. In next field you can see the printer driver version. Field **Capabilities** will inform you if you can download fonts or graphics to memory card.

Memory Card

In this section you first find out which file is attached to which slot (this is always currently active slot). Then you have two fields. In **Description** field you can enter your personal description of memory card. **Card size** field allows you to select memory card size (in kilobytes).

3.1.6 Printer Selection

This command displays a standard Windows printer setup dialog in which you can select printer and change its settings.



Print Setup dialog box

3.1.7 Format

This command will format (erase) the memory card so that it is prepared for downloading data to it. Formatting erases all the data on the memory card.

3.1.8 Reload memory card

When this command is executed, program will first format the memory card and then reload all data to selected memory card. This option is also useful when you would like to multiply memory cards.

3.1.9 Download All

This command downloads all the fonts and graphics in the current configuration file to the memory card.

3.1.10 Status Print

Test print label with basic information.

3.1.11 Exit

This command will close the program.

Note, Windows operating system (its printer drivers) doesn't know anything about the changes you've just

made to the memory card, when you will exit the GalleryMemMaster program. Before usage any of the downloaded graphics or fonts, you have to notify the appropriate printer driver about them or you will not be able to select downloaded pictures or graphics. Once this is done, the printer driver updates the changes on the memory card automatically.

You should also be aware of the fact that Label Gallery saves printer settings in each .LBL file. The printer settings have to be updated in all .LBL files, connected to the selected printer, if you want to use graphics and fonts on the memory card. For more information refer to Label Gallery documentation and Sato drivers documentation.

3.2 View

Under **View** menu, there are two switches to turn the presentation of fonts and graphics on and off.

3.3 Fonts

The commands under **Fonts** menu help you to prepare fonts to download to memory card.

3.3.1 Add

This command adds new TrueType font to the configuration file. First the dialog box **Fonts** is shown allowing you to select the font. You can choose between all the TrueType fonts installed on your Windows system. Then the dialog box **Font Data** appears showing you all the information regarding selected font. This dialog box is the same as one displayed with **Fonts/Edit** command. If you need no other special options, you can just confirm the selection by clicking on **OK** button.

Note, some printer have truetype font download enabled, others have not. If this is the case with your printer, then the whole truetype font is downloaded and you can use that particular font in all possible file sizes. If the printer does not support .TTF download, only the font in selected point size will be downloaded to the memory card.

3.3.2 Delete

This command will delete selected fonts from configuration file. If font is already downloaded, program will first remove it from memory card.

3.3.3 Download

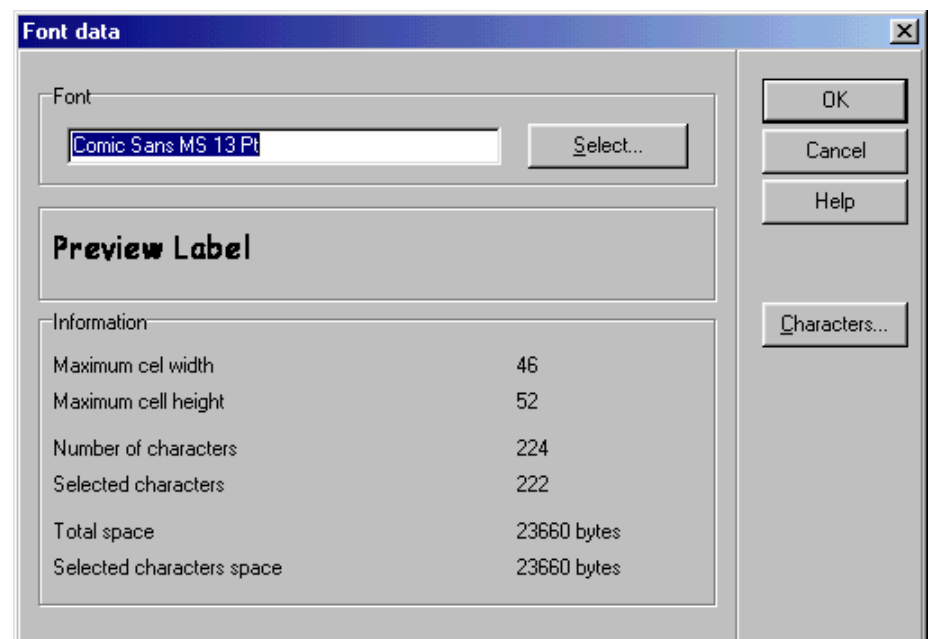
Highlight the fonts you want to download on the memory card and activate the **Download** command. The program will decode and download the font. The downloaded font will be signed with icon before its name.

3.3.4 Remove

Use this command to remove selected fonts from memory card. Some printers do not support this option. In this case the option is dimmed and if you want to remove the font, you have to format the memory card and then delete the fonts from settings file.

3.3.5 Edit

This command shows the *Font data* dialog box where all information regarding selected font is displayed. You can change the font and choose which characters will be downloaded and which not.



Font data dialog box

Font

Here is shown the currently selected TrueType font. You can choose another by clicking on the **Select** button. Beneath is a sample of how the font will look when printed.

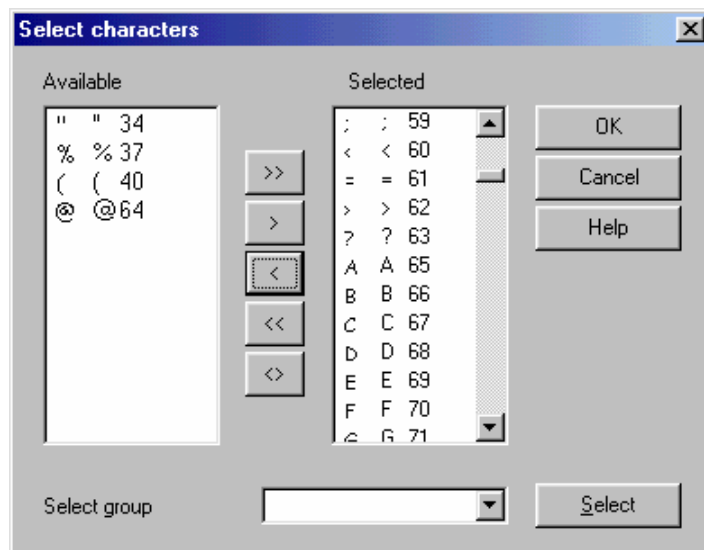
Information

Here you can view dimensions of the font and required memory space.

Characters

You can select only a subset of characters to minimize space that this font will occupy on memory card. In dialog, which appears after you press **Characters** button, you have two list boxes with characters. You can move them from one to another using buttons in between. In both list boxes there are three columns. In first there is character in selected font. In second is ASCII representation and in third it is character number.

This option is valid only for printers, that do not allow the whole Truetype font to be downloaded.



Select characters dialog box

In dialog box are two list boxes.

- **Available** list box: In this list box are all characters that are available in selected font and are not already selected.

- **Selected** list box: All characters, which will be downloaded to printer, are in this list box.

Some printers do not support all characters. Unsupported characters are painted red. You can select them, but they will not be downloaded to memory card.

Buttons

<< and >>

by pressing this buttons you will transfer all characters from list box to the other side

< and >

GalleryData will transfer only selected characters in the list box to the other side.

<>

Program will swap selected characters between **Available** and **Selected** list box. What is the contents of left list box will be transferred to the right side and vice versa.

Select

GalleryData has several predefined groups. of characters. In this field you can select a group of typical characters.

3.3.6 Test print

Prints the highlighted downloaded font on the printer.

3.4 Graphics

Commands in **Graphics** menu allow you to prepare and download bitmap graphics to the memory card.

3.4.1 Add

This command adds a new graphic to configuration file. The file must already exist on your disk and must be in one of the supported graphics formats:

- BMP
- PCX
- GIF

- JPEG
- etc.

3.4.2 Delete

This command will delete selected graphics from configuration file. All downloaded graphics will be first removed from selected memory card.

3.4.3 Download

This command downloads selected graphics to the memory card. Downloaded graphics will be signed with icon before its name.

3.4.4 Remove

Use this command to remove selected graphics from memory card. Some printers do not support this option. In this case the option is dimmed and if you want to remove the graphics, you have to format the memory card and then delete the graphics from configuration file.

3.4.5 Edit

With this command you can choose other graphic instead of selected one. Downloaded graphics can not be modified.

3.4.6 Test print

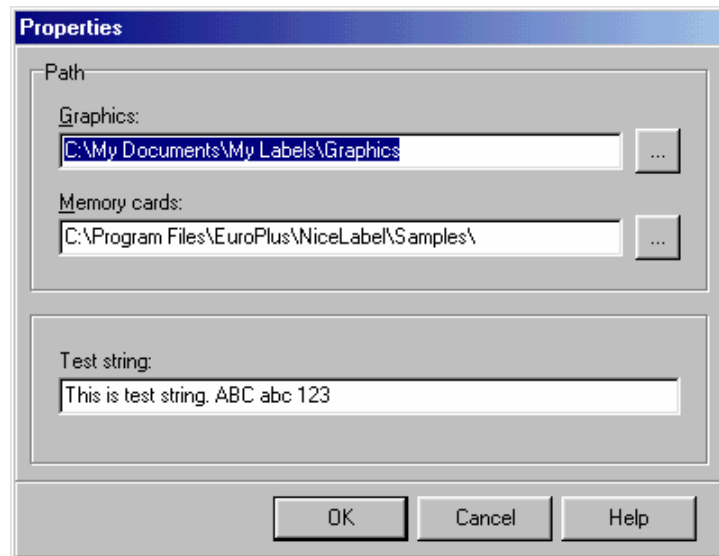
This command prints the selected downloaded graphics on the printer.

3.5 Settings

In this menu are located the settings that are independent from printer selection.

3.5.1 Properties

Settings/Properties command displays the following dialog box:



Properties dialog box

Here you can choose what string will be printed when you select **Test Print**. You can also define a default folders for loading and saving graphics and memory card structure files.

3.6 Tools

Here you can also quickly start other programs from SATO Label Gallery TruePro.

Label Gallery Plus

Start **Label Gallery Plus** - program for designing and printing labels.

GalleryForm

Starts GalleryForm - custom user entry form designer.

GalleryData

Starts GalleryData - database manager and editor.

GalleryWatch

Start GalleryWatch - a program that can automatically trigger label production when certain events occur.

3.7 Help

Use the Help menu to access the online Help system, which displays in a special Help window.

3.7.1 Contents

Choose **Contents** command to open the help file. The online help provides a comprehensive screen that summarizes the contents of the Help system.

Each of the headings on the contents screen is an expanding list. When you click the highlighted underlined text, it displays additional help topics about the topic.

3.7.2 Label Gallery on the web

Open **Label Gallery** web site (www.satoworldwide.com) in your current web browser.

3.7.3 About

Choose **About** command to display the *About GalleryMemMaster* dialog box showing version, user name, serial number and copyright information.

3.7.4 Missing Help Topic

The Help topic associated with the currently selected request is unfortunately not available in on-line help at this time. Label Gallery help is in constant process of upgrade and the new version of Label Gallery software with updated help files might already be available for download on the internet.

Please visit Label Gallery website at <http://www.satoworldwide.com> and verify if the upgrade of Label Gallery software is available.