
SATO Label Gallery TruePro

Installation guide

SATO International Pte Ltd

English Edition

Version SI-040603-05

Copyright © 2004-2005 SATO International Pte Ltd
All rights reserved.

Contents

1. Installation	1-1
1.1 Contents of the package.....	1-1
1.2 System Requirements	1-1
1.3 Software installation procedures	1-2
1.3.1 Installing Label Gallery software	1-2
1.3.2 Installing Label GalleryDrivers for your label printer	1-7
1.3.3 Running setup at a later time	1-9
1.4 Installing HASP hardware key (full version of Label Gallery software only).....	1-10
1.4.1 Installing HASP parallel hardware key.....	1-10
1.4.2 Installing HASP USB hardware key	1-11
1.4.3 Troubleshooting.....	1-11
1.5 Notes about the Borland Database Engine (BDE)	1-12
2. Technical Support	2-13

1. Installation

1.1 Contents of the package

Before starting the installation you should:

1. Check the contents of the package to ensure it is complete. The package must include:

- SATO Label Gallery TruePro CD-ROM
- User's guide
- Hardware key (not available with all versions)

2. Read the READ.ME file on the CD-ROM for latest information.

If any of the mentioned items is missing, please contact your software vendor immediately for package replacement.

Should you require any information about Label Gallery product range, please visit Label Gallery website at <http://www.satoworldwide.com>.

1.2 System Requirements

To run the program you will need at least the following:

- IBM Personal computer (or compatible). A Pentium or more powerful, is recommended.
- One of the 32-bit Windows operating systems: Microsoft Windows 95/98, Me, NT, 2000 or XP.

- At least 32 MB RAM memory.
- VGA or a higher graphic display.
- A mouse is recommended.
- Hard disk with 15 to 65 MB of free disk space (depending on the installation options).
- CD-ROM drive.
- BDE (Borland Database Engine) interface. If it is not already available on the computer, setup will install it.

1.3 Software installation procedures

When you insert the CD-ROM in CD-ROM drive, the auto-run demonstration/installation program is automatically started. Just follow on-screen instructions to look at Label Gallery demos and install the application. If autorun program doesn't start automatically, please double-click START.EXE in the root directory of Label Gallery CD-ROM.

To manually install Label Gallery software or to make administrative changes and reinstall some Label Gallery components, run SETUP.EXE program from appropriate Disk1 folder under SETUP folder structure on the CD-ROM.

To install GalleryDriver for your thermal transfer printer run PRNINST.EXE from Drivers folder on the CD-ROM.

Please note!

If you are using Windows NT, 2000 or XP, you have to log on as a user with Administrator rights to properly install the software.

Through the installation, you can click *Exit* button to abort the process of the installation. You can click *Previous* button to get back to the previous step or click *Next* to proceed with installation.

1.3.1 Installing Label Gallery software

Close all currently running applications. Then click the appropriate buttons in a Label Gallery demonstration/installation program. For example: to

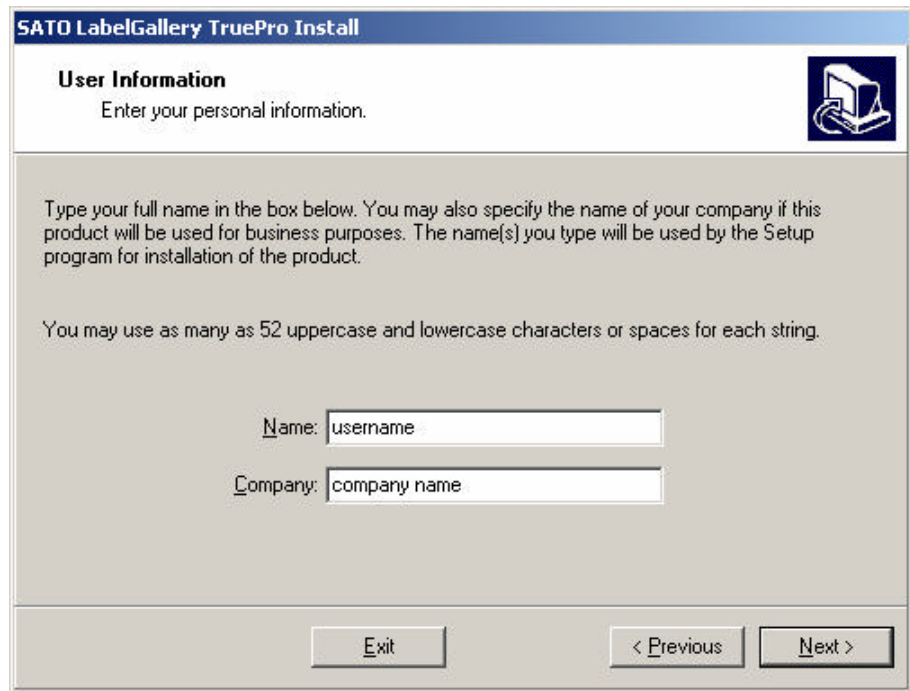
install SATO Label Gallery TruePro, you should click **Setup** button and then **SATO Label Gallery TruePro** button. Wizard-driven installation will be started. Follow on-screen instructions.

To begin with the setup procedure, first the working language must be selected. Default language corresponds to the language of the default Windows system locales. If you prefer, you can also choose some other language in the list. Select your favorite language and then click the **Next** button to proceed with the setup.

If you are upgrading from some of previous versions of Label Gallery software that is not compatible with current version, you are offered to uninstall the previous version first. For example, this happens if you make an upgrade from SATO Label Gallery Easy to SATO Label Gallery Plus. All existing label files will remain intact during the upgrade procedure. When uninstall of previous version is complete setup will continue.

Read the Welcome, License Agreement and Readme information. Then click *Next* button to continue.

The setup will further ask you to enter the username and the company name. If this information already exists on your computer, the setup will use the existing names. If you have one of the Standard versions of Label Gallery software (they do not have support for printing to thermal printers) you can also enter the serial number of you Label Gallery copy. You can find it on the inner side of Label Gallery Manual cover.

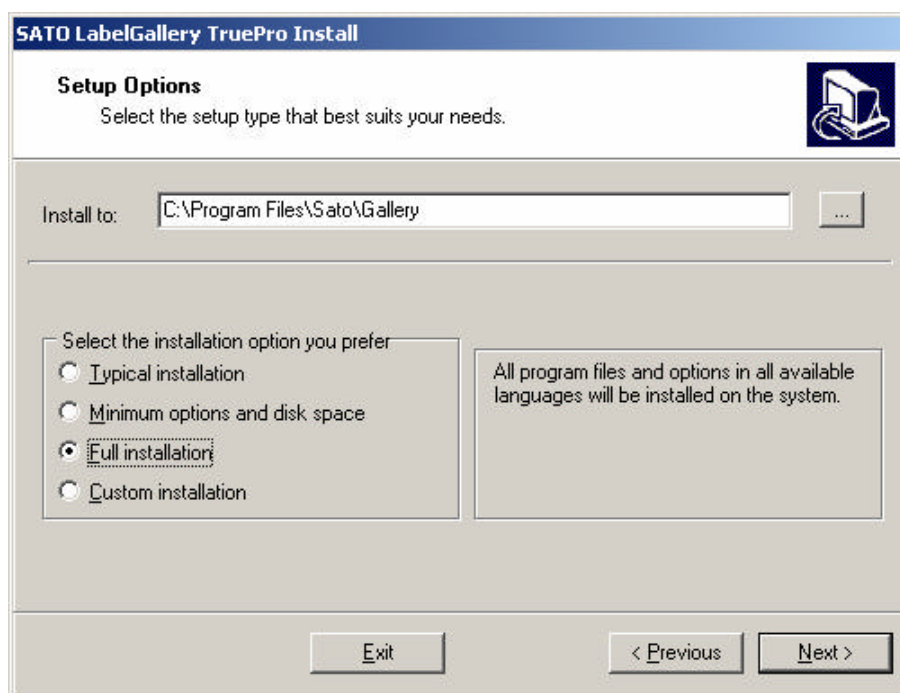


User information dialog box

In the SETUP OPTIONS dialog box, select the installation options and the folder to install the program in. You can accept the default or choose a folder of your choice by clicking the **Browse** button. Click **Next** when you are finished.

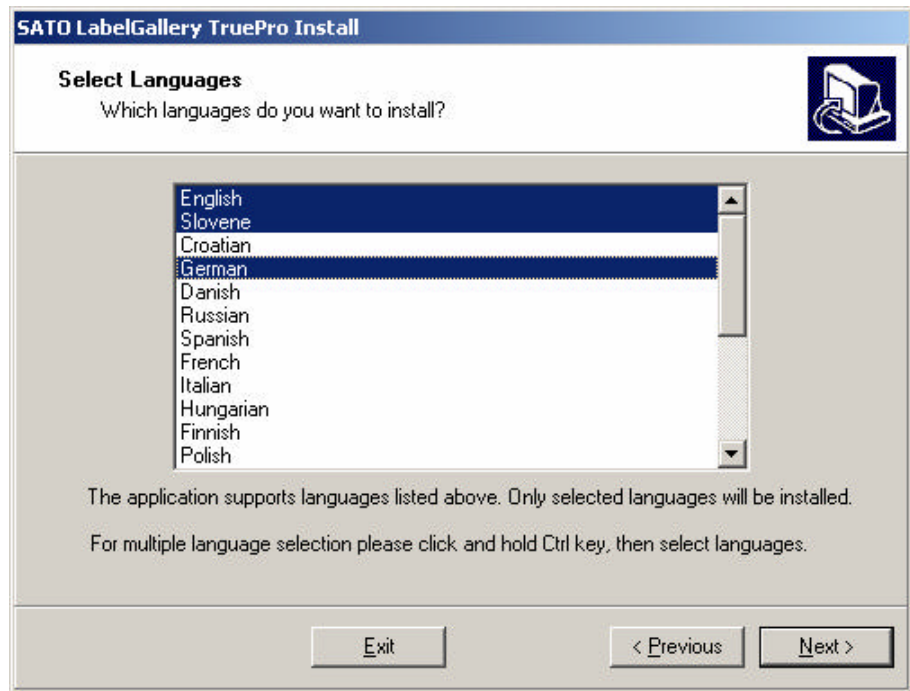
Types of installations are:

- **Typical Installation** - installs components, appropriate for typical use of software only in the selected language.
- **Minimum Options And Disk Space** - installs only minimal set of components needed for Label Gallery application to work correctly. Help and sample files are not installed.
- **Full Installation** - installs all Label Gallery components in all available languages.
- **Custom Installation** - you can select which components are installed after clicking the *Next* button.



Setup options dialog box

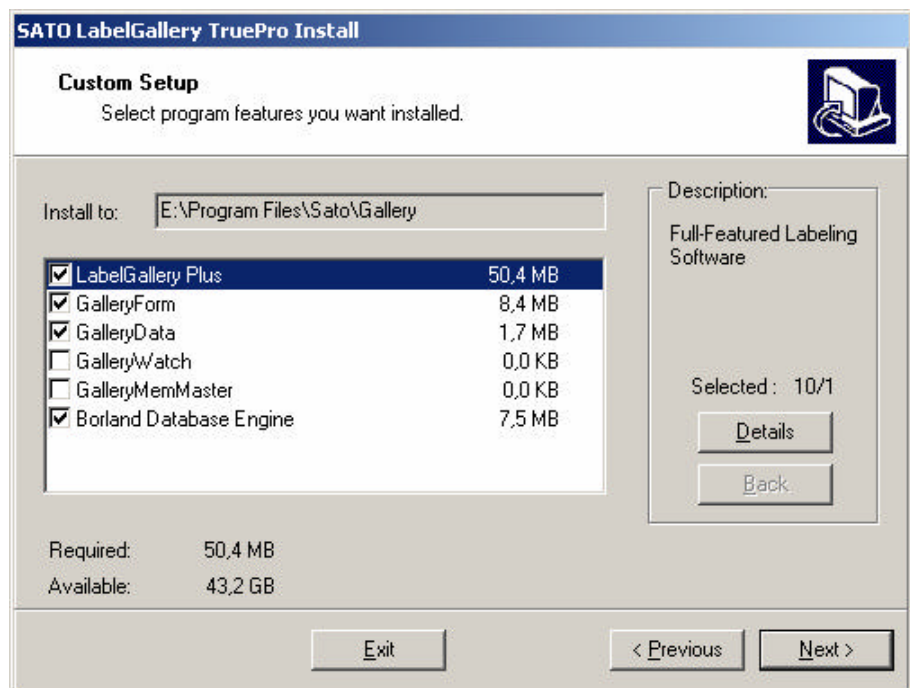
In the next dialog box you select language(s) that will be installed and available in Label Gallery software. Normally the selection of default system language is sufficient. But in case you need to use several languages at once or want to select your native language, here can make the choice. Hold down <Ctrl> key and click the languages to select. Note that this dialog is not displayed if you selected *Minimum options and disk space* installation option.



Language selection

If you selected *Custom installation*, another dialog box is shown, that allows you to further customize which parts of software package are installed. If the selected component can be partially installed, the **Details** button will become available allowing you to further customize your selection.

Click *Next* button to proceed.



Custom setup dialog box

Install Options Overview dialog box informs you about the current setting of the installation and the drive space needed for the installation. Review the install options and make any necessary change to the selection. When satisfied click *Next* button to begin copying files to your hard disk.

When setup finishes copying files, you are offered to install the printer driver. Click **Next** to begin installing or **Finish** to skip the driver installation. Note that driver installation begins only if you are installing Label Gallery software from the CD-ROM. Select the printer manufacturer and model.

After installation the computer must be restarted if some application keeps connection to some system files and Label Gallery setup cannot update them. In this case click *Finish* button to restart Windows. Click *Cancel* button to postpone restarting Windows, but remember to restart it before using Label Gallery software.

New program group for Label Gallery software will be created in the *Start* menu, containing icons for all executables. Shortcut to main Label Gallery application will be also placed on the desktop.

1.3.2 Installing Label Gallery Drivers for your label printer

Label Gallery software can be used to design and print labels to standard office printers (laser, inkjet, matrix...) or to professional label printers. If you own a label printer, you have to install the appropriate printer driver before the printer can be used in Windows environment.

A collection of Label Gallery Drivers for printer models of all major printer brands is provided on your Label Gallery CD-ROM. Label Gallery Drivers are true Windows thermal/transfer label printer drivers and can be used from any Windows application for label printing, but best results and printing optimization are achieved from Label Gallery software.

Using provided Printer Installation Wizard

- To start Gallery Driver installation for your particular label printer please insert Label

Gallery CD-ROM in the CD player. Main installation application should auto-start.

- If not, start Windows Explorer and browse to the CD-ROM, there double click the program START.EXE.
- On the main menu select the option **Install**. The list of all Label Gallery software products available on the CD-ROM will be displayed. Click the option **Label Gallery Drivers** to start installation procedure. Wizard-driven installation will be started.
- From the list of all supported printer brands and models select your printer.
- Select the port, where you have connected your printer and click Finish to install the printer driver.

Using Windows classic Add Printer Wizard

The recommended method is to use provided Printer Wizard installation utility PRNINST.EXE. Alternatively you can install Gallery Driver for your printer using classic Windows method.

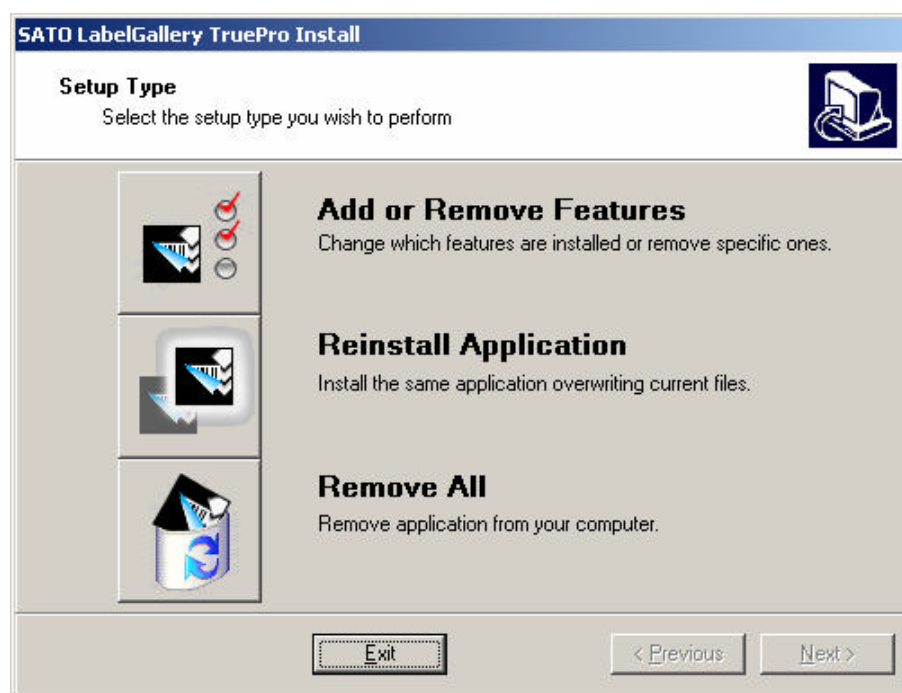
- Open Control Panel from Settings in Start menu. Then double click the Printers icon.
- Printers dialog box will be displayed showing all already installed printers on your system. Double click the **Add printer** icon to start installation procedure.
- Follow the Add Printer Wizard steps. The actual steps vary depending on your Windows operating system version. It is only important to click the **Have disk** button in a step where you can select printer manufacturer and model.
- Insert Label Gallery CD-ROM into your drive (if not already present) and browse to the folder \Drivers. Select the folder with your printer brand name. Click Open/OK buttons to return to the Add Printer Wizard.

- The list of all available printer models of selected brand will be displayed. Choose your model then click **Next** button and finish the installation.

Please note, Windows 2000 and Windows XP might prompt you to cancel the installation procedure, as Label Gallery Drivers do not have digital signature by Microsoft. **It is safe to continue with installation at this point.** Label Gallery Drivers indeed haven't been certified by Microsoft, but have been subject of intensive pre-release testing. They are true Windows drivers, providing stable operation on all 32-bit Windows platforms including Windows 2000 and XP.

1.3.3 Running setup at a later time

If you want to remove or add the component, go to the *Control panel* and select Label Gallery from *Add/Remove* programs dialog, or simply rerun the setup program from Label Gallery program group.



Setup type dialog box when setup is run at a later time

In the dialog box you can select **Add or Remove Features** to add or remove the desired Label Gallery component(s). **Reinstall** will repeat the last installation by copying all the previously selected files all over again and so correcting the incorrect installation (missing or corrupted files). If you select **Remove All**, all installed components will be removed from your hard disk.

1.4 Installing HASP hardware key (full version of Label Gallery software only)

Hardware key is required for Label Gallery software to run properly. Without it SATO Label Gallery Easy works in DEMO mode, allowing only 5 labels to be printed concurrently. Hardware key has to be attached to the computer where Label Gallery software is installed.

1.4.1 Installing HASP parallel hardware key

Please follow these steps to successfully install hardware key:

- Shutdown your computer and switch off your printer.
- Connect the hardware key directly to the parallel port (marked as LPT or PRN port) on your computer. Parallel port on your computer is easily to recognize. It is the only 25-pin female port at the back of your computer case.
Please note: Never try to connect it directly to a printer or to a serial port on the computer. You can permanently damage hardware key as well as your computer equipment.
- Connect the hardware key to this port in such a manner that pins on the key plug into holes in the computer port. Fasten the two screws to secure the key in place.
Please note: Do not remove the screws or try to turn them inside out.
- If you own a printer with a parallel port, please connect one end of the parallel printer cable to the hardware key and the other one to your

printer.

If you own a printer with serial port, please connect one end of the serial printer cable to the serial port on your computer and the other one to your printer.

Please note: If you own a serial printer, you cannot connect it directly to the hardware key, because the connectors are not compatible (both are female connectors). Always connect your serial printer to the serial port, and hardware key to parallel port. It is not necessary for your printer to print "through" the hardware key.

1.4.2 Installing HASP USB hardware key

If your Label Gallery package is equipped with USB hardware key instead of the parallel port equivalent, to install it just plug it into the available USB port and you are done.

Note, Windows NT operating system does not natively support USB devices; Microsoft never developed the necessary driver. That is why first you will have to install USB driver to your system. A proprietary USB driver has been provided on your Label Gallery CD-ROM. Follow the enclosed installation instructions in the file USB4NT.ZIP in the folder \Updates\HASP.

1.4.3 Troubleshooting

Problems can occur if you need to use bi-directional features of your parallel port to which the hardware key is connected. If your printer stops working properly, when connected to the hardware key you should re-install a hardware key device driver with different command-line parameter. Device driver installation is available on Label Gallery CD-ROM in the folder \Updates\Hasp.

This program is HINSTALL.EXE. Run it with following parameters:

```
HINSTALL -i -portmode=bidi
```

or

```
HINSTALL -i -portmode=ecp
```

When the device driver is installed, please restart Windows. First try the first option, then the second one. More information about command-line parameters is displayed if you run the utility with parameter `/?`

HINSTALL `/?`

1.5 Notes about the Borland Database Engine (BDE)

BDE is a library of programs needed for database access. Programs in SATO Label Gallery TruePro use this library to access the databases on your computer.

Label Gallery requires some specific settings in BDE that need to be made by the installation program. These changes might interfere with other applications that use BDE to access databases.

So, if you have other applications installed that use BDE, please check BDE settings after installation of the Label Gallery is complete. If necessary, use the BDE Administrator program to set the values that you want.

2. Technical Support

If you experience any technical difficulties using the program, the first thing to do is to refer to the on-line help and program documentation available in PDF files (Portable Document Format) on Label Gallery CD-ROM. There you also will find a comprehensive **How to** section, explaining how to utilize common labeling-related techniques and detailed program **Reference**.

The latest bug fixes, workarounds for problems and Frequently Asked Questions can be found at Label Gallery website under Support section. If you cannot solve the problem on your own, please contact your local software vendor, from which you purchased your copy of Label Gallery software. They have all the expertise to help you in any error situation.

For more information please also refer to:

Label Gallery FAQ:

http://www.satoworldwide.com/our_products/label.asp

Label Gallery Technical Support can be reached at email address softwaresupport@sato-int.com.