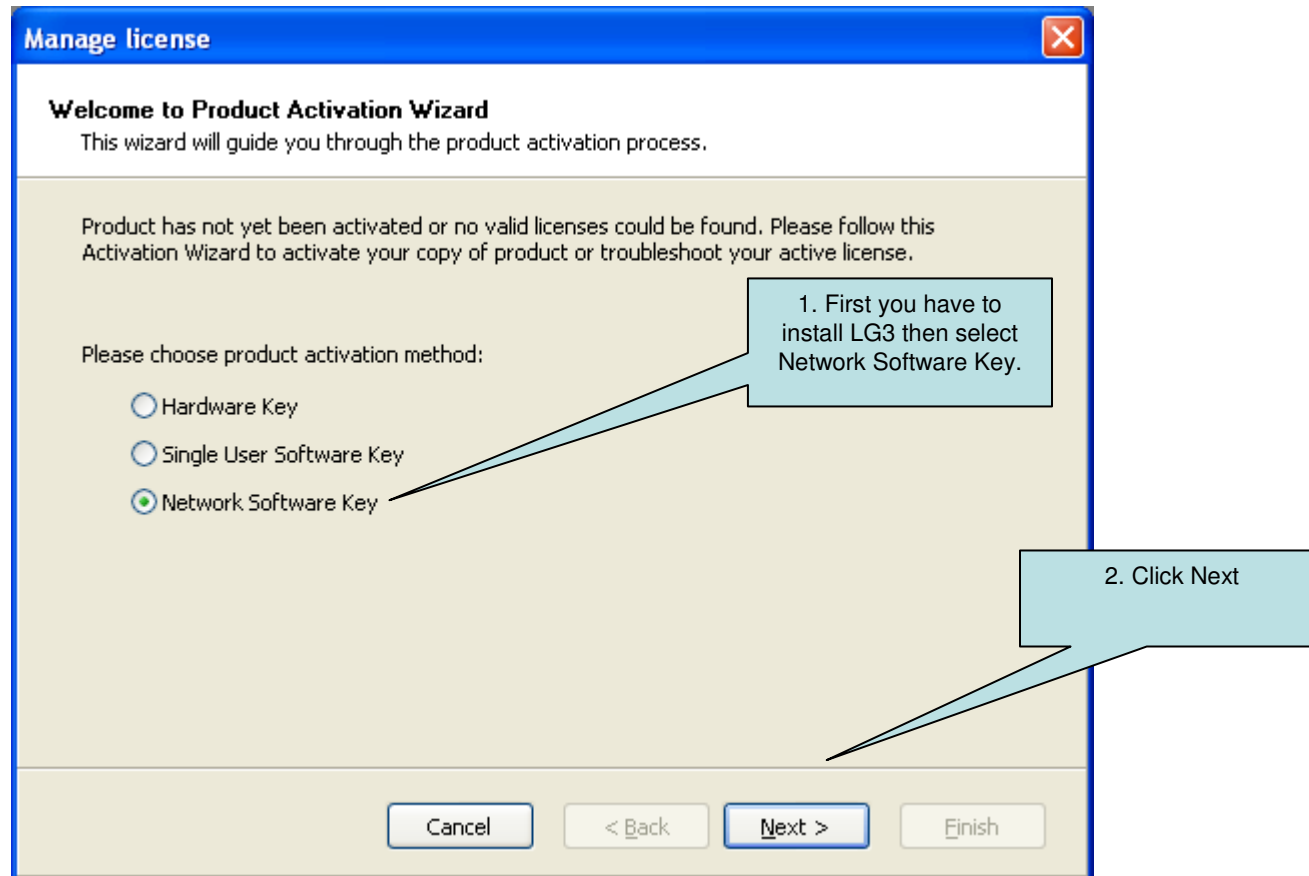




LG3 Network edition Activation Steps (on PC with Internet Access)



Note: If you can't find this screen, click on Help, then Manage License at the Menu



LG3 Network edition Activation Steps (on PC with Internet Access)

Manage license

Network installation location
Select network installation location.

Network installation could not be found. Please select network location where product was installed. You can also specify secondary (backup) network location, which will be used if primary location is not available.

Make sure to enter the location in the UNC syntax even if the files are available on the local disk. Do not use the syntax with local or mapped drives.

For example: if you are sharing the folder C:\Application as 'Application' on the 'Server', the UNC path to the location is '\\Server\Application'.

Primary network location
 ...

Secondary (backup) network location
 ...

Cancel < Back Next > Finish

1. Input the Primary Network installation location



LG3 Network edition Activation Steps (on PC with Internet Access)

Manage license

User Information
Enter user information.

Please enter your information. Note that fields marked with * are required.

Name	Nancy Ho				*
Company	SATO INTERNATIONAL PTE LTD				*
Address Line 1					
Address Line 2					
Zip or Postal Code		City			
Country	Singapore				*
E-mail	nancyho@sato-int.com				*
Key Number	TJRMX	- XXXXX	- 6WU7A	- XXXXX	- EBUDP *

Buttons: Cancel, < Back, Next >, Finish

1. Input the LG3 NW license# obtained from the purchased

2. Click Next



LG3 Network edition Activation Steps (on PC with Internet Access)

Manage license

Activation Code
Enter activation code.

Please enter software activation code. You can save activation data into file by pressing button save.

Key Number
TJRMX XXXXX 6WU7A XXXXX EBUDP

Registration Number
ZQEC9 XXXXX SCSWR XXXXX SJ8K5

Activation Code
|

If your computer is connected to the internet, you can select the automatic activation link.

Activation Code can also be acquired through the publisher's Activation Web page.

Automatic activation: [Connect to the Activation server](#)

Web page activation: http://www.satoworldwide.com/labelgallery/network_activation_in

Save data Cancel < Back Next > Finish

Click to Activate



LG3 Network edition Activation Steps (on PC with Internet Access)

DEMO - SATO Label Gallery Plus

File Edit View Object Data Transformations Tools Window Help

Print Zoom View Variables Database Functions

Select
Text
Text Box
Rich Text Box
Bar code
Picture
Rectangle
Line
Ellipse
Inverse
RFID Tag

Manage license

Activation Code
Enter activation code.

Please enter software activation code. You can save activation data into file by pressing save.

Key Number
TJRMX XXXXX 6WU7A XXXXX EBUDP

Registration Number
ZQEC9 44

Activation Code
YDQLC WY

If your computer is connected to the internet, you can use the automatic activation link.

Also be publisher's

Automatic activation: [Connect to the Activation server](#)

Web page activation: http://www.satoworldwide.com/labelgallery/network_activation.in

Save data Cancel < Back Next > Finish

Activation completed

Activation completed successfully. Product is now ready for use.

OK

You have successfully upgraded to LG3 NW



LG3 Network edition Activation Steps (on PC with Internet Access)

Manage license

License information
Network license information

Network license information:

Name	Value
Product:	LabelGallery
License Level:	Network
License Type:	Network license
Key Number:	TJRMX-XXXXX-6VMU7A-XXXXXX-EBUDP
Version:	3.x
Number of Licenses:	5
Off-line Mode	Disabled

You are able to confirm the version.

Open License Manager

If you would like to manage the current network license, the wizard will assist you with the license management process.

Manage current network license

Cancel < Back Next > Finish



The End