



# Hardware Key Upgrade Steps (PC with Internet Access)

DEMO - SATO Label Gallery Plus

File Edit View Object Data Transformations Tools Window Help

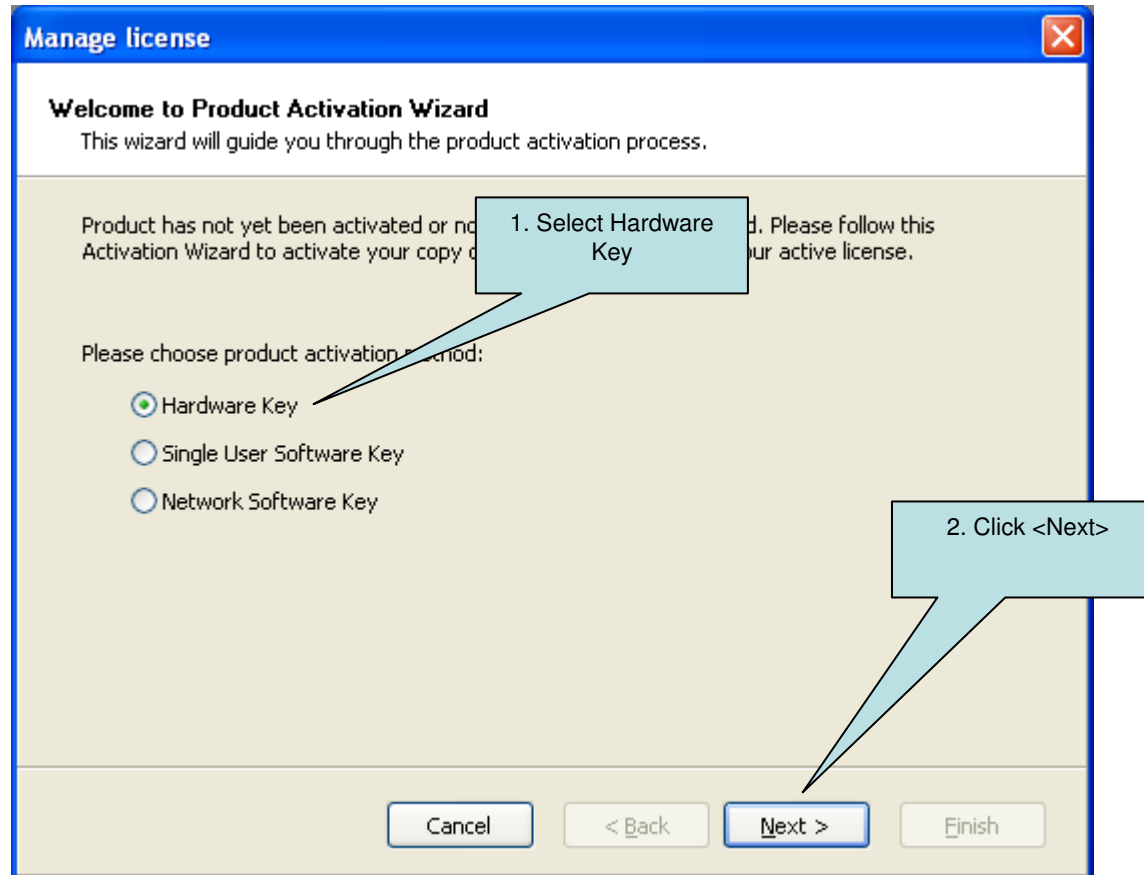
Content F1  
Internet Support...  
LabelGallery on the WEB  
Manage License  
About

1. Install LG3 and Please plug in your existing H/W Key.

2. Select Manage License



# Hardware Key Upgrade Steps (PC with Internet Access)





# Hardware Key Upgrade Steps (PC with Internet Access)

**Manage license**

**License information**  
Hardware key license information

Hardware key license information:

Name	Value
Product:	LabelGallery
License Level:	True Pro
License Type:	Hardware Key
Key Number:	XXXXX-XXXXX-XXXXX-XXXXX-XXXXX
Version:	2.x

Refresh

If you want to manage current hardware key license, the wizard will assist you with the management process.

Manage current hardware key license

Cancel < Back Next > Finish

1. Check here to Manage license upgrade

2. Click <Next>

Previous version



# Hardware Key Upgrade Steps (PC with Internet Access)

**Manage license**

**Manage hardware key license**

Please select your action.

Upgrade hardware key license  
This will start the hardware key license upgrade process. User must have a valid upgrade key number to successfully finish the upgrade process.

Get software key of the Pocket PC edition  
User of current license is entitled to one free Client Access Number (CAL) of the Pocket PC software edition. This action will open a WEB page where you can obtain the software key.

Cancel   < Back   Next >   Finish

1. Upgrade hardware key license

2. Click <Next>



# Hardware Key Upgrade Steps (PC with Internet Access)

**Manage license**

**Upgrade code**  
Enter upgrade code.

Please enter upgrade key number and upgrade activation code. You can save the license into file by pressing button save.

Old Key Number  
TUKDS-4CJFX-CHNB6-DP6PW-X6V7P

Upgrade Key Number  
XXXXX UAS7E XXXXX JW7EP XXXXX

Registration Number  
XXXXX 65QHL XXXXX SUL3V 358RZ

Activation Code  
| | | | |

Automatic activation: [Connect to the Activation server](#)

Web page activation: [http://www.satoworldwide.com/labelgallery/upgrade\\_activation\\_in](http://www.satoworldwide.com/labelgallery/upgrade_activation_in)

Buttons: Save data, Cancel, < Back, Next >, Finish

Callout 1: 1. Input the Hardware Key Upgrade license that you have purchased

Callout 2: 2. Click here to obtain Activation Code automatically

Text: If your computer is connected to the internet, you can select the automatic activation link.

Text: Activation Code can also be acquired through the purchase Activation Web page.



# Hardware Key Upgrade Steps (PC with Internet Access)

**Manage license**

**Upgrade code**  
Enter upgrade code.

Please enter upgrade key number and upgrade activation code. You can save activation data into file by pressing button save.

Old Key Number: TUKD5-4CJFX-CHNB6-DP6PW-X6V7P

Upgrade Key Number: TCGTQ UA

Registration Number: 437HQ 650

Activation Code: G3JJY XC

Automatic activation: [Connect to the Activation server](#)

Web page activation: [http://www.satoworldwide.com/labelgallery/upgrade\\_activation\\_in](http://www.satoworldwide.com/labelgallery/upgrade_activation_in)

Buttons: Save data, Cancel, < Back, Next >, Finish

**Upgrade completed**  
Upgrade completed successfully. Product is now ready for use.

OK

Click <OK>



# Hardware Key Upgrade Steps (PC with Internet Access)

**Manage license** [Close]

**License information**  
Hardware key license information

Hardware key license information:

Name	Value
Product:	LabelGallery
License Level:	True Pro
License Type:	Hardware Key
Key Number:	TCGTQ-UAS7E-7F5TL-JW7EP-TALFP
Version:	3.x

[Refresh]

If you want to manage current hardware key license, the wizard will assist you with the license management process.

Manage current hardware key license

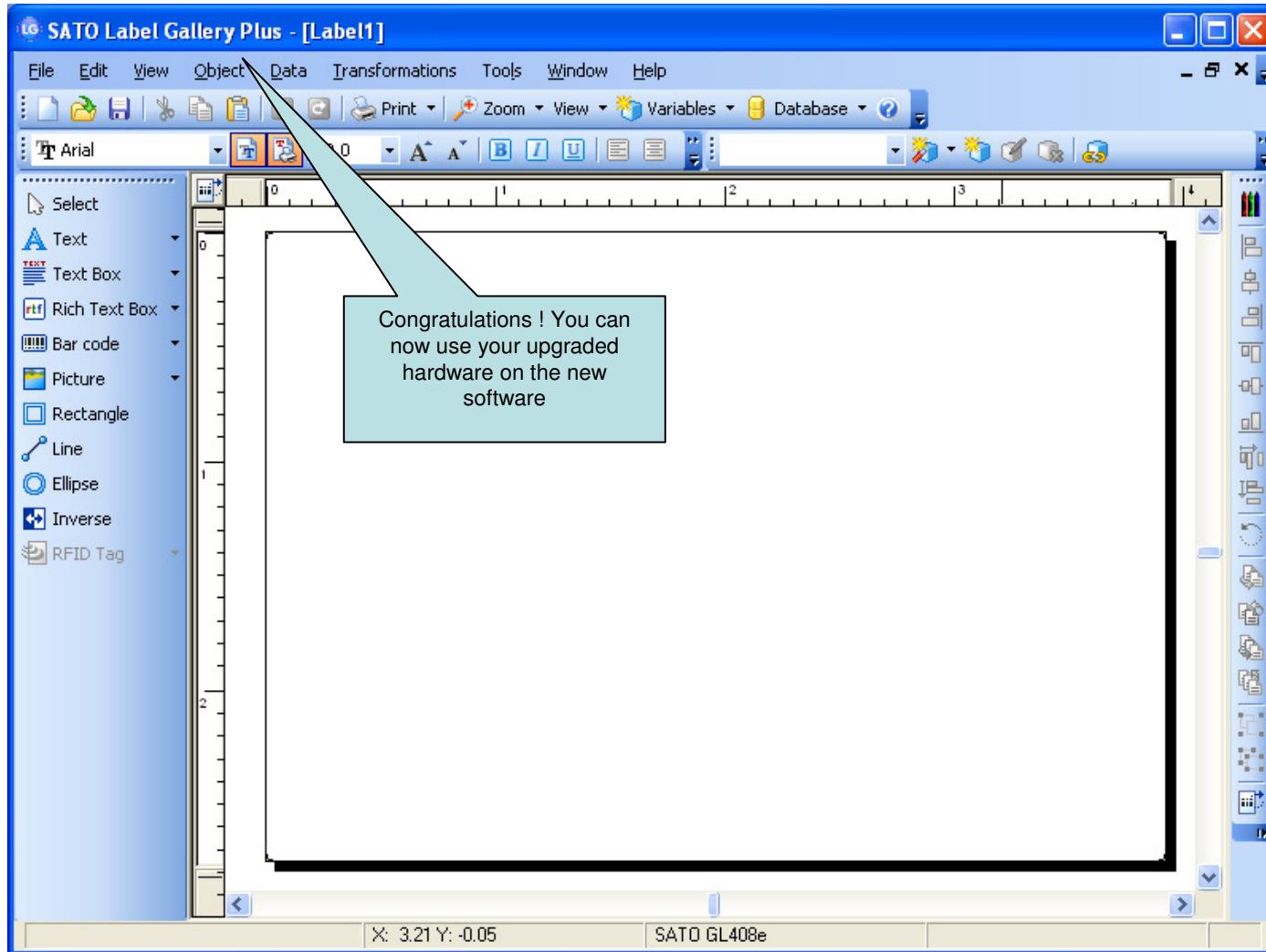
[Cancel] [ < Back ] [ Next > ] [ Finish ]

1. Congratulations ! You have successfully upgraded your hardware key

2. Click <Finish>



# Hardware Key Upgrade Steps (PC with Internet Access)





# The End