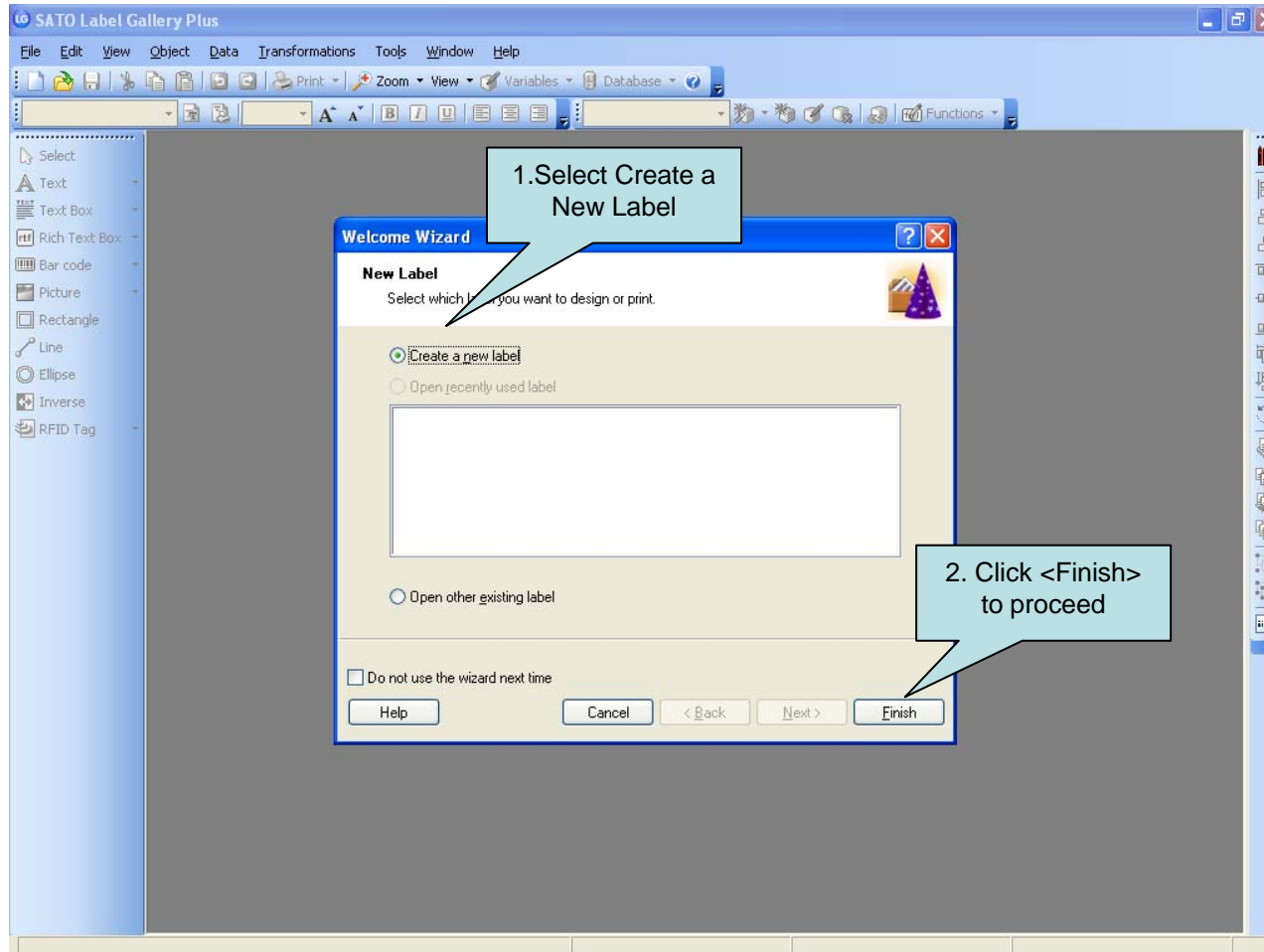




DESIGN YOUR FIRST LABEL





DESIGN YOUR FIRST LABEL

SATO Label Gallery Plus - [Label1]

File Edit View Object Data Transformations Tools Window Help

Print Zoom View Variables Database

Arial 10.0

Select
Text
Text Box
Rich Text Box
Bar code
Picture
Rectangle
Line
Ellipse
Inverse
RFID Tag

Label Setup Wizard

Select Printer

Select the printer you want to use with this label.

Choose the printer from the list of installed printers. The label will be optimized for this printer.

SATO GL408e Properties...

Always use default printer
 Double-sided printing

You can change the printer-specific settings by clicking the 'Properties' button.

Open the advanced options dialog box
 Do not use the wizard next time

Help Cancel < Back Next > Finish

1. Select your Printer Model


2. Click <Next> to proceed

start 2 C e. u. 2 EN Type to search 100% 1:38 PM



DESIGN YOUR FIRST LABEL

Label Setup Wizard [?] [X]

Select Stock 

Predefined label formats (stocks) can speed up label design.

Select the label stock.
If you define label dimensions on your own, skip this step and click the Next button.

Stock type:

Stock name:

Label linked to stock


Stock information:

Click <Next> to proceed



DESIGN YOUR FIRST LABEL

Label Setup Wizard [?] [X]

Page Size 

Select the paper size that best matches your needs.

Define the page size for your labels. When using thermal printers, always select the first option to automatically set the page size based on the label dimension. Label dimensions are then set in the following steps.

Automatically set from label dimensions (default)

Select page size

Page size

User defined

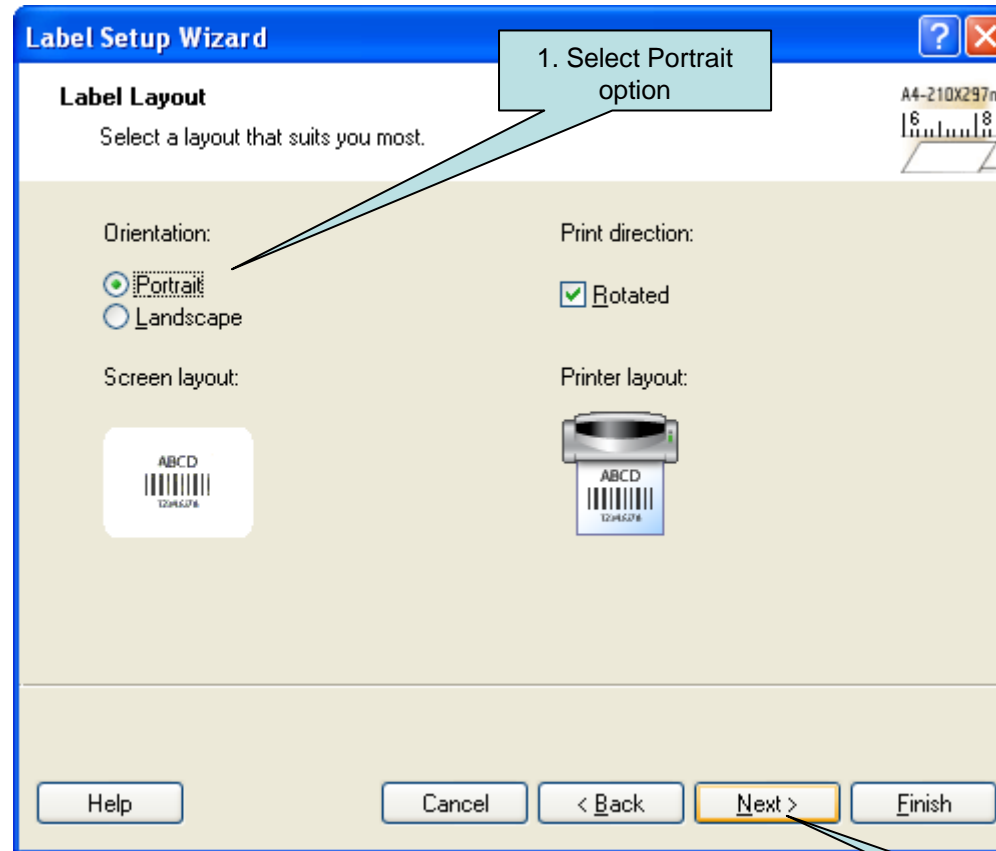
Help Cancel < Back **Next >** Finish

1. Select this option to set label size

2. Click <Next> to proceed



DESIGN YOUR FIRST LABEL



2. Click <Next> to proceed



DESIGN YOUR FIRST LABEL

Label Setup Wizard

Label Dimensions
Set the label layout dimensions and select the appropriate unit of measure.

1. Set Label width & height

Label width: 10 Label height: 7

Top Margin: 0.0 Left Margin: 0.0

Bottom Margin: 0.0 Right Margin: 0.0

Columns: 1 X gap: 0.0

Rows: 1 Y gap: 0.0

Unit of measure: cm

Open the advanced options dialog box

Help Cancel < Back Next > Finish

2. Click <Finish> to proceed



DESIGN YOUR FIRST LABEL

SATO Label Gallery Plus - [Label1]

File Edit View Object Data Transformations Tools Window Help

Print Zoom View Variables Database

Arial 10.0

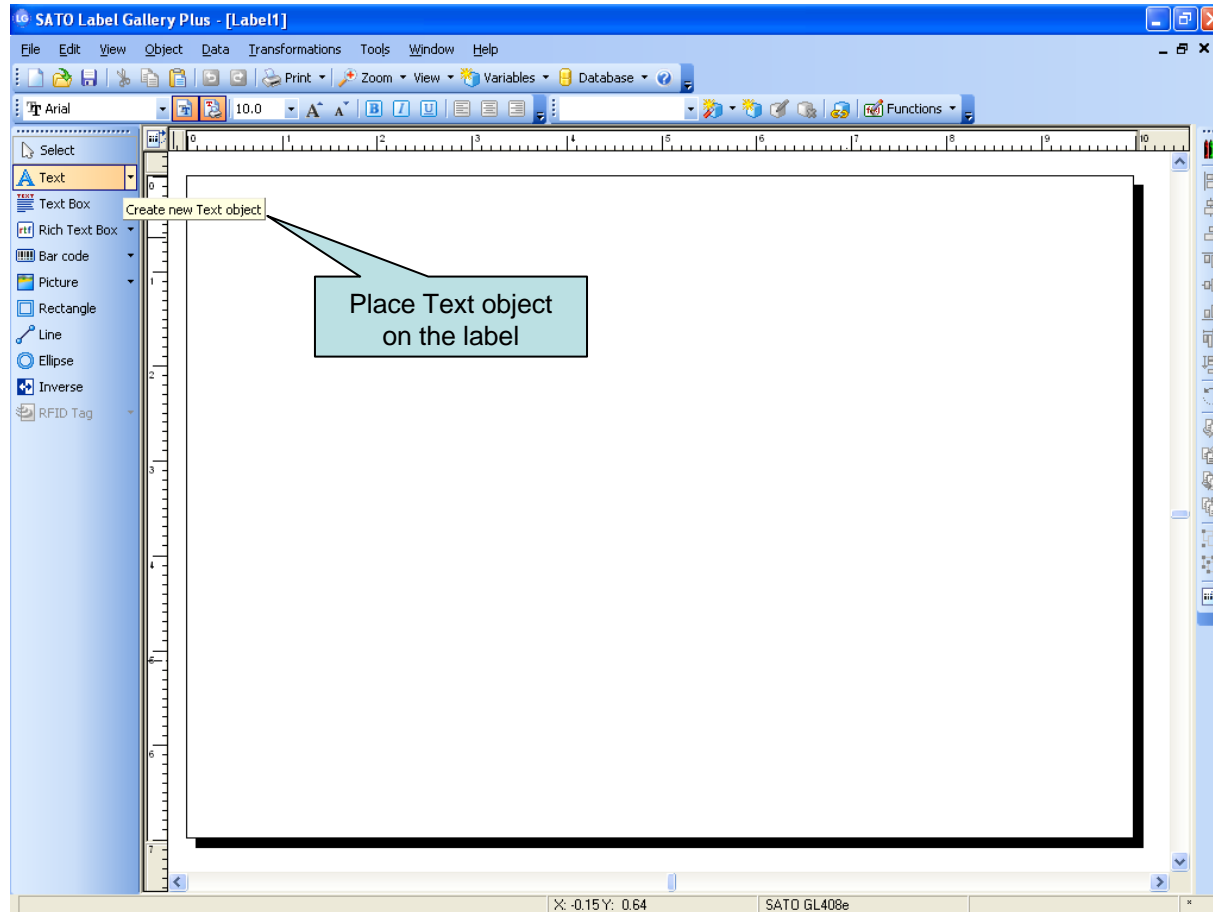
Select
Text
Text Box
Rich Text Box
Bar code
Picture
Rectangle
Line
Ellipse
Inverse
RFID Tag

X: 6.95 Y: 5.10 SATO GL408e

A blank label is ready for you to design



DESIGN YOUR FIRST LABEL





DESIGN YOUR FIRST LABEL

SATO Label Gallery Plus - [Label1]

File Edit View Object Data Transformations Tools Window Help

Print Zoom View Variables Database Functions

Text Wizard

Text Object
Define the contents and style of

Content
 Fixed text Variable text

SAMPLE

Font
Arial 10.0 Pt Select...

Inverse

Open the advanced options dialog box
 Do not use the wizard next time

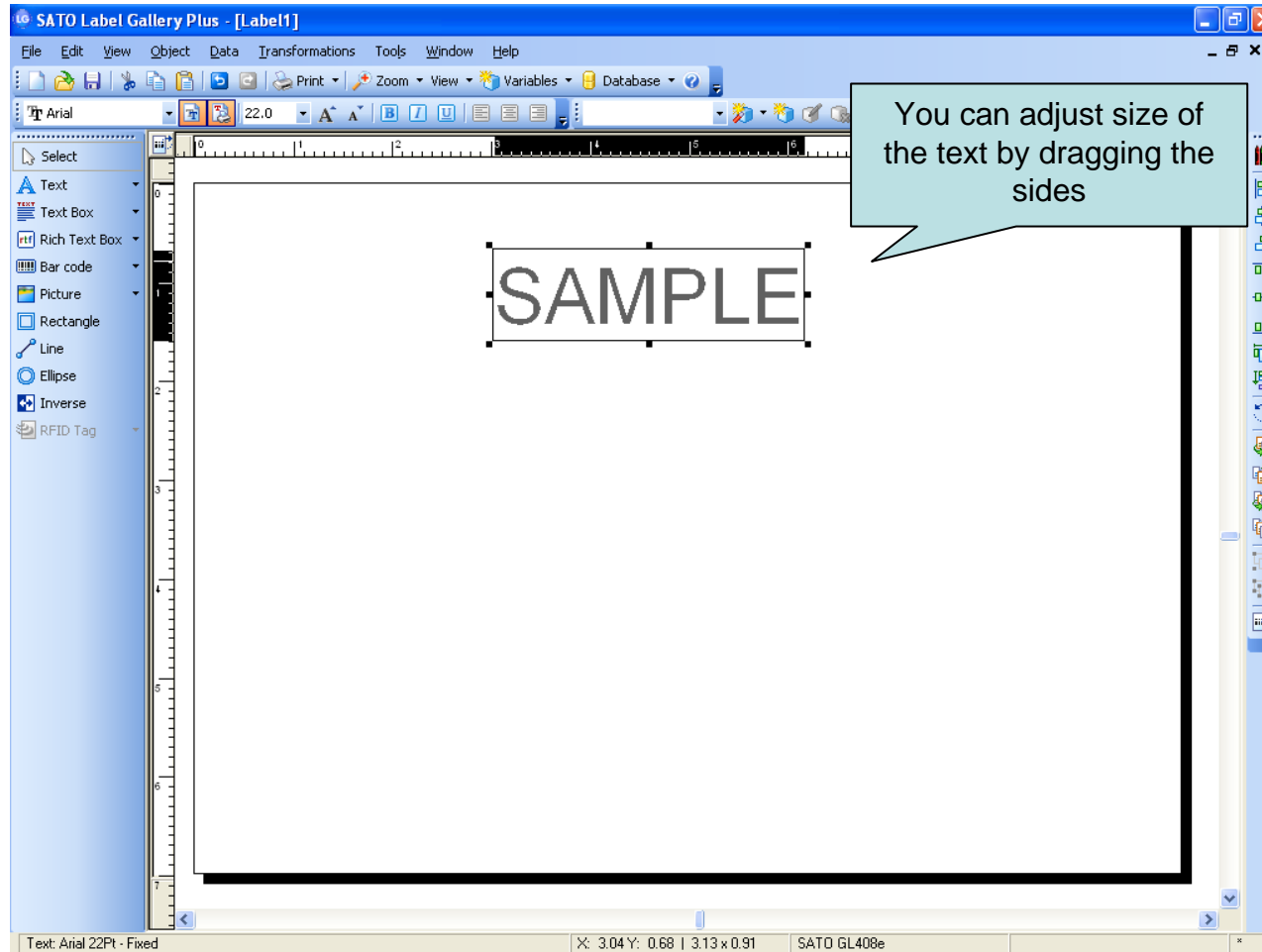
Help Cancel < Back Next > Finish

1. Input text e.g. "SAMPLE"

2. Click <Finish> to proceed

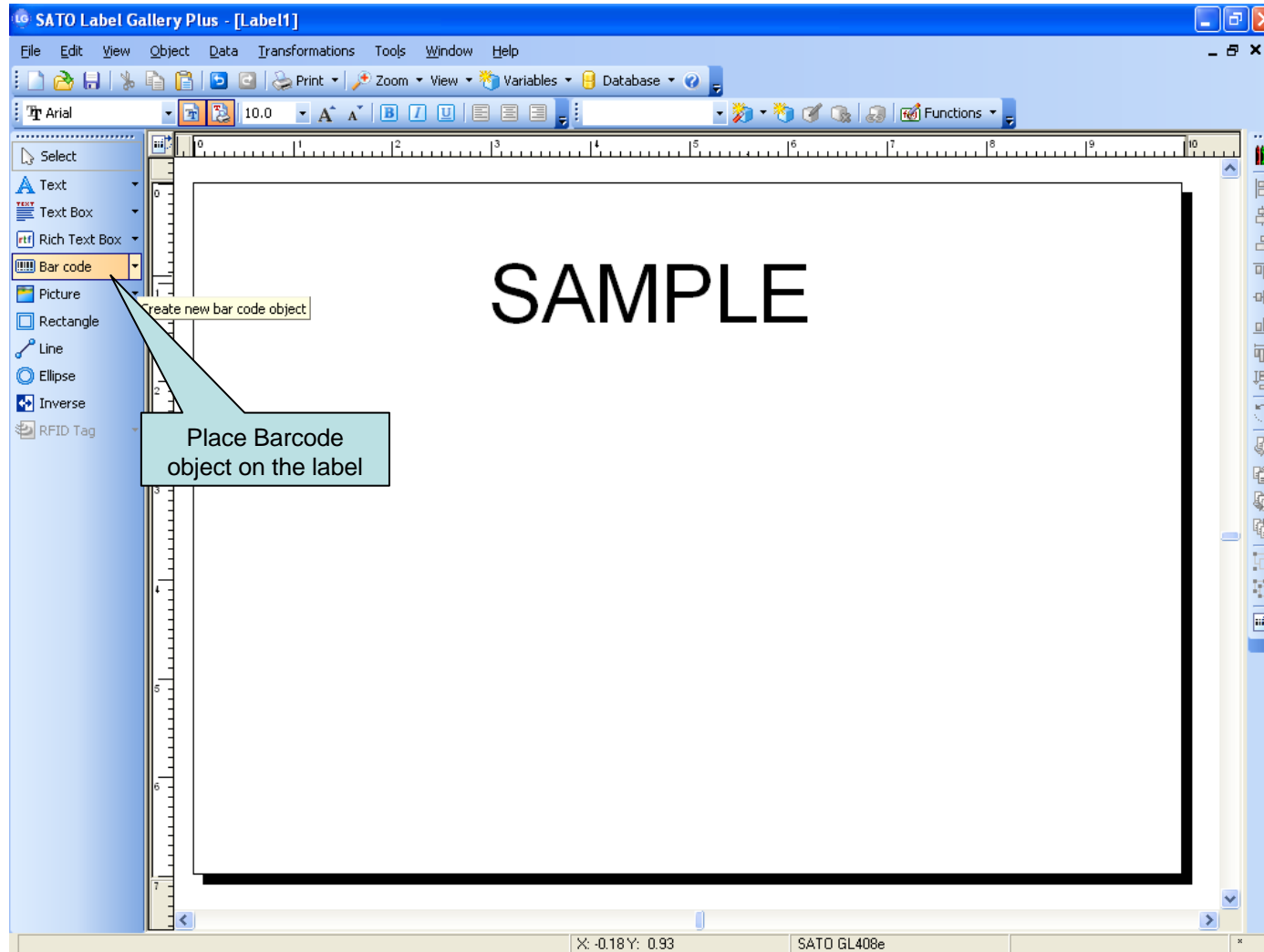
X: 2.65 Y: 1.49 SATO GL408e

DESIGN YOUR FIRST LABEL



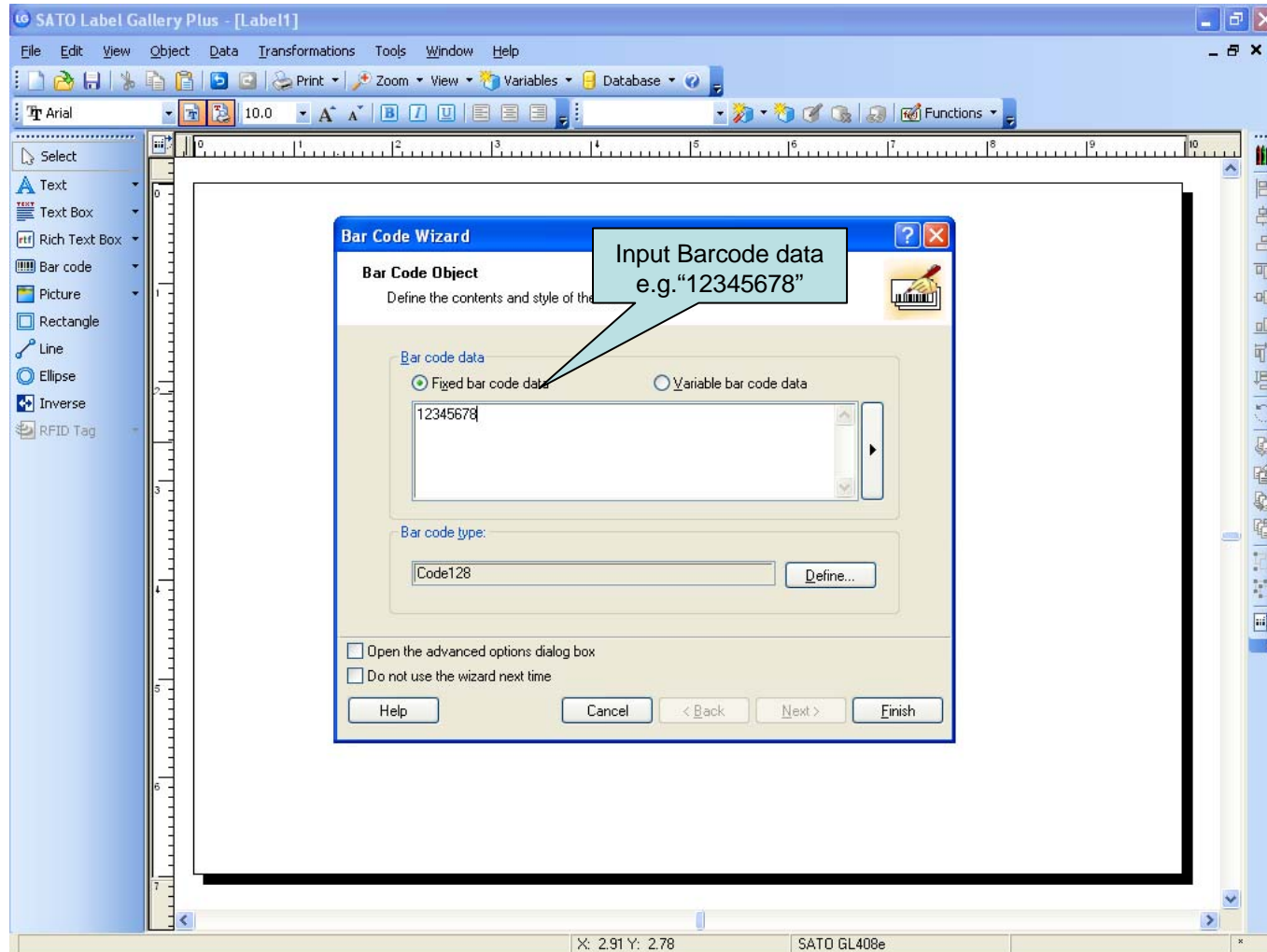


DESIGN YOUR FIRST LABEL





DESIGN YOUR FIRST LABEL



DESIGN YOUR FIRST LABEL



SATO Label Gallery Plus - [Label1]

File Edit View Object Data Transformations Tools Window Help

10.0

Select

- Text
- Text Box
- Rich Text Box
- Bar code
- Picture
- Rectangle
- Line
- Ellipse
- Inverse
- RFID Tag

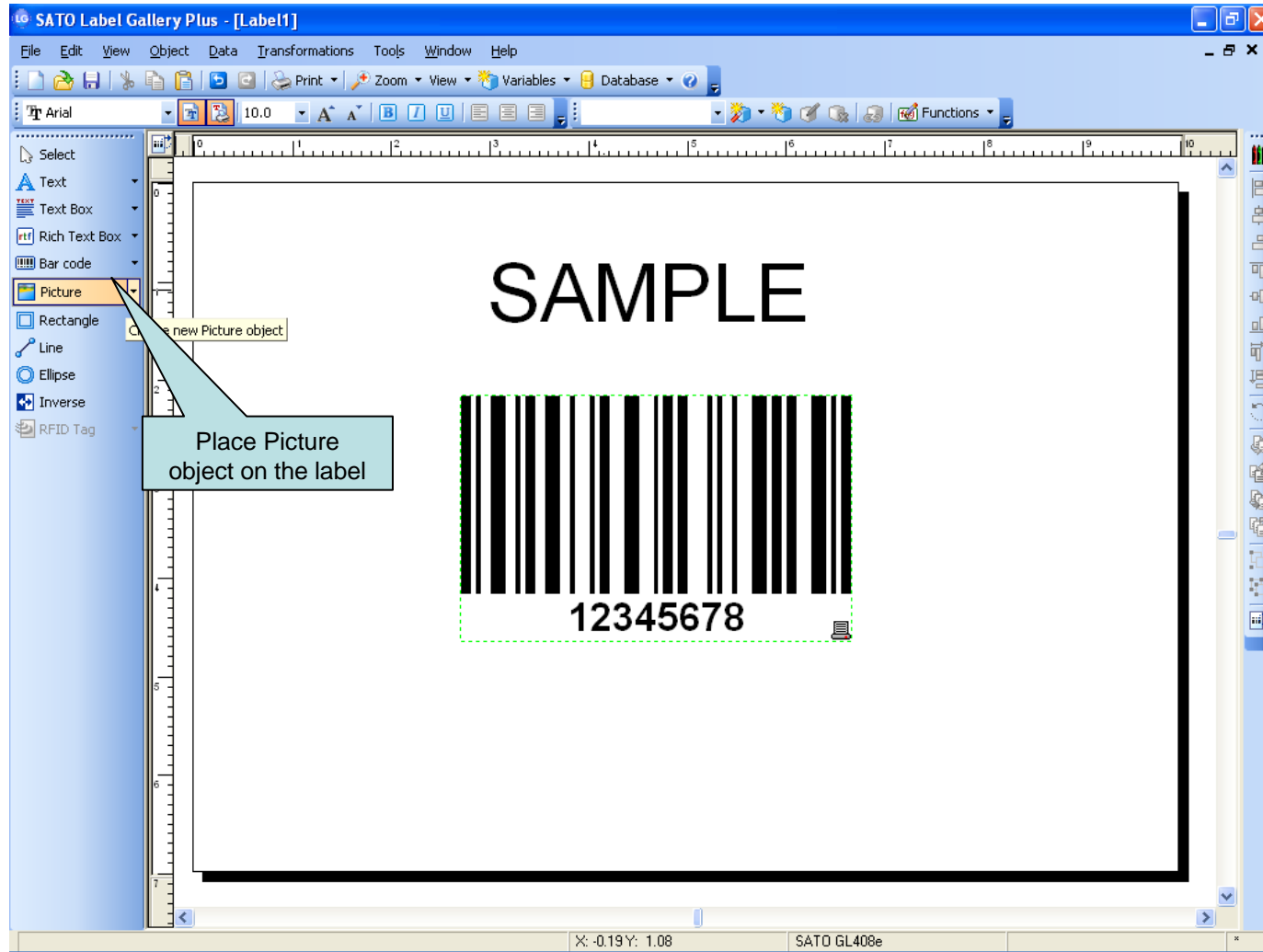
SAMPLE

12345678

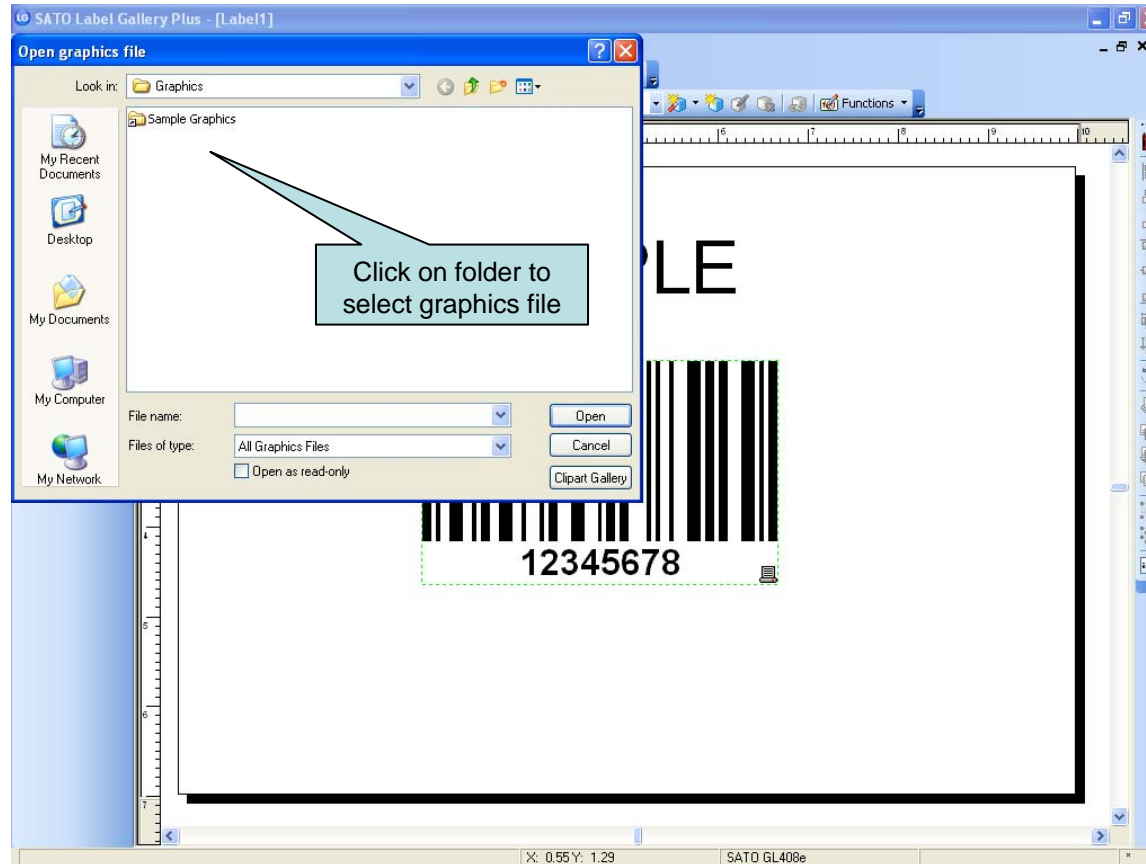
You can adjust size of the barcode by dragging the sides

X: 6.70 Y: 4.21 SATO GL408e

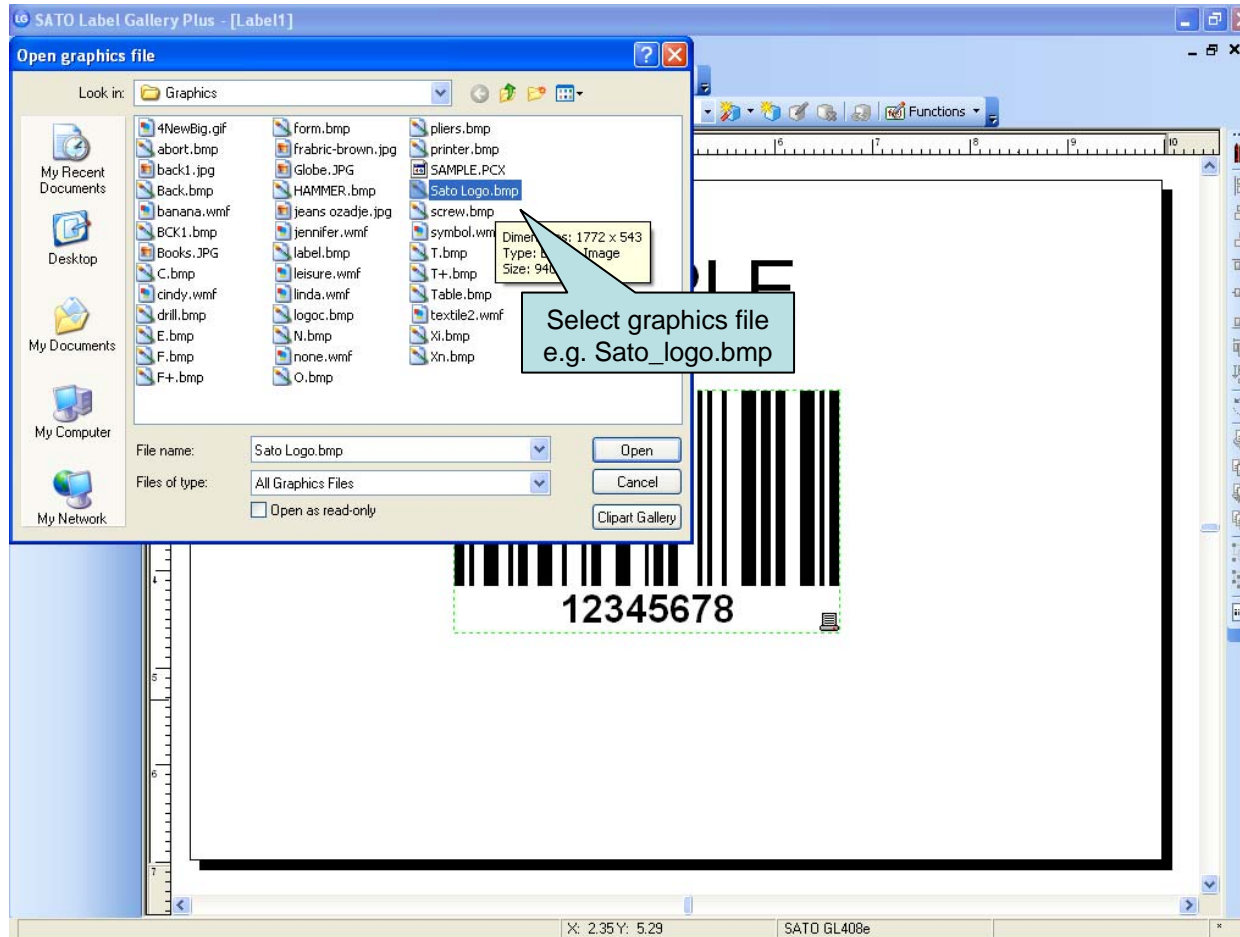
DESIGN YOUR FIRST LABEL



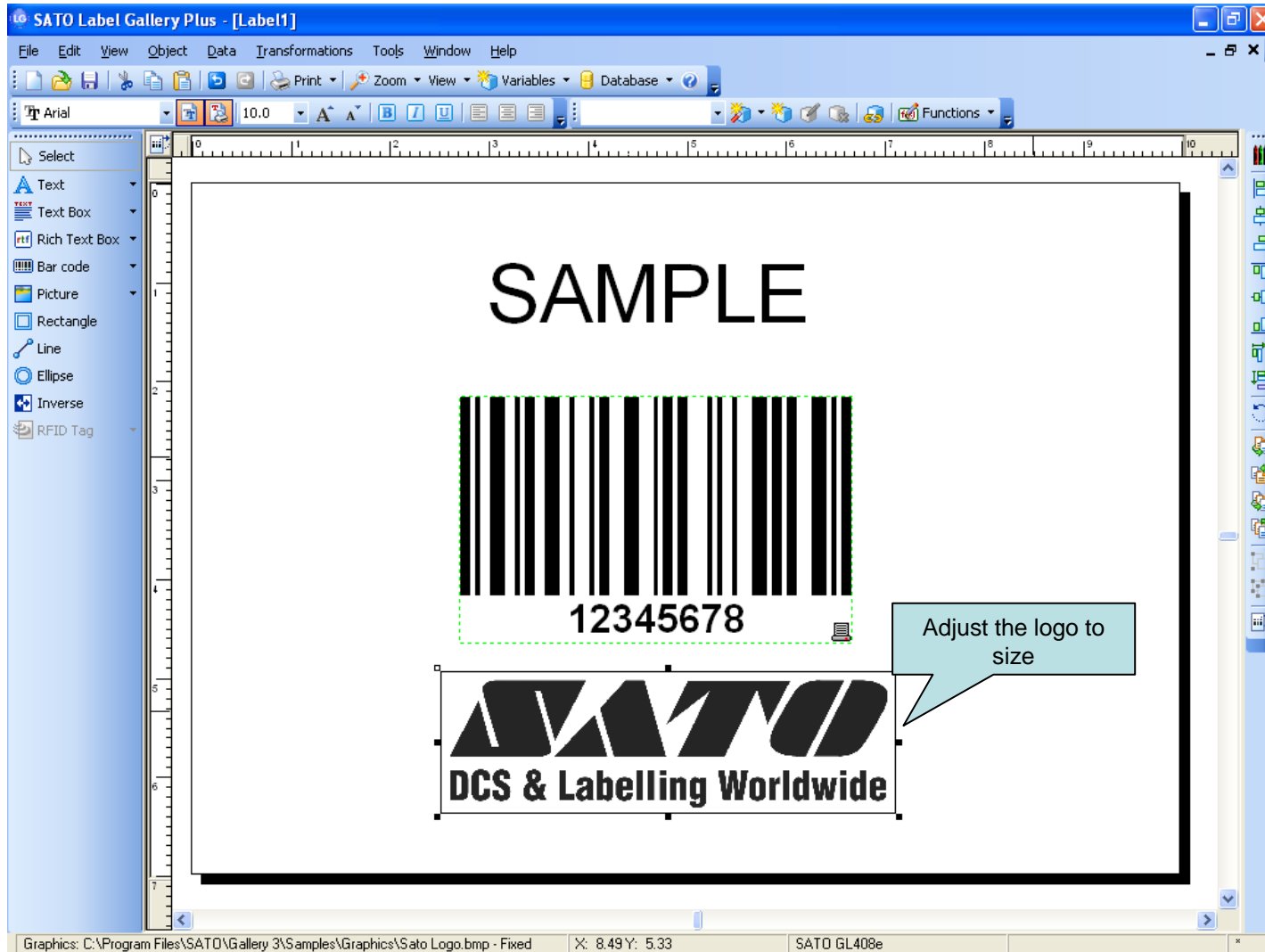
DESIGN YOUR FIRST LABEL



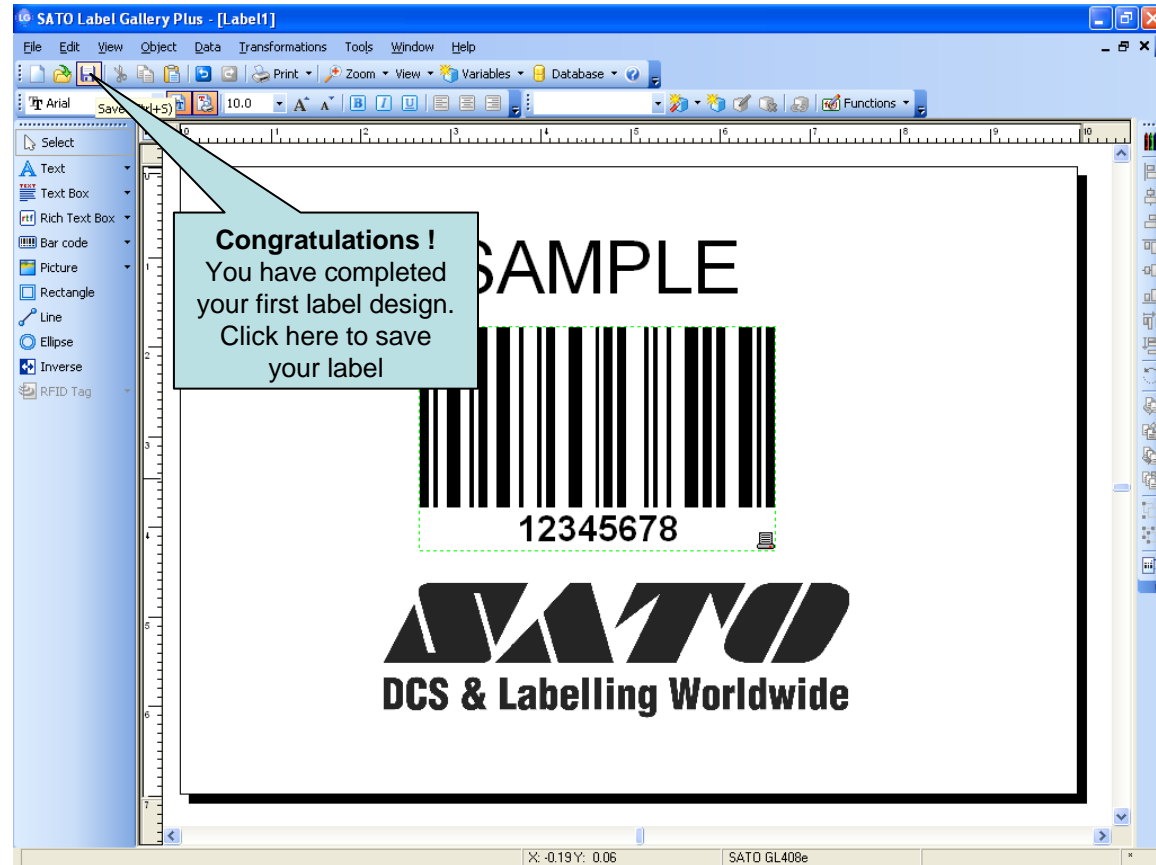
DESIGN YOUR FIRST LABEL



DESIGN YOUR FIRST LABEL



DESIGN YOUR FIRST LABEL



DESIGN YOUR FIRST LABEL



The screenshot shows the SATO Label Gallery Plus software interface. A 'Save' dialog box is open, displaying a file explorer view of the 'Labels' folder. The file name is set to 'MyFirstLabel' and the save type is 'Label Gallery (*.lbl)'. The background shows a label design with a barcode, the number '12345678', and the SATO logo. A callout box points to the 'Save' button with the text: 'Please input Filename and click on <Save> button to save your label design'. The status bar at the bottom indicates 'X: -0.12 Y: -0.25' and 'SATO GL408e'.



The End