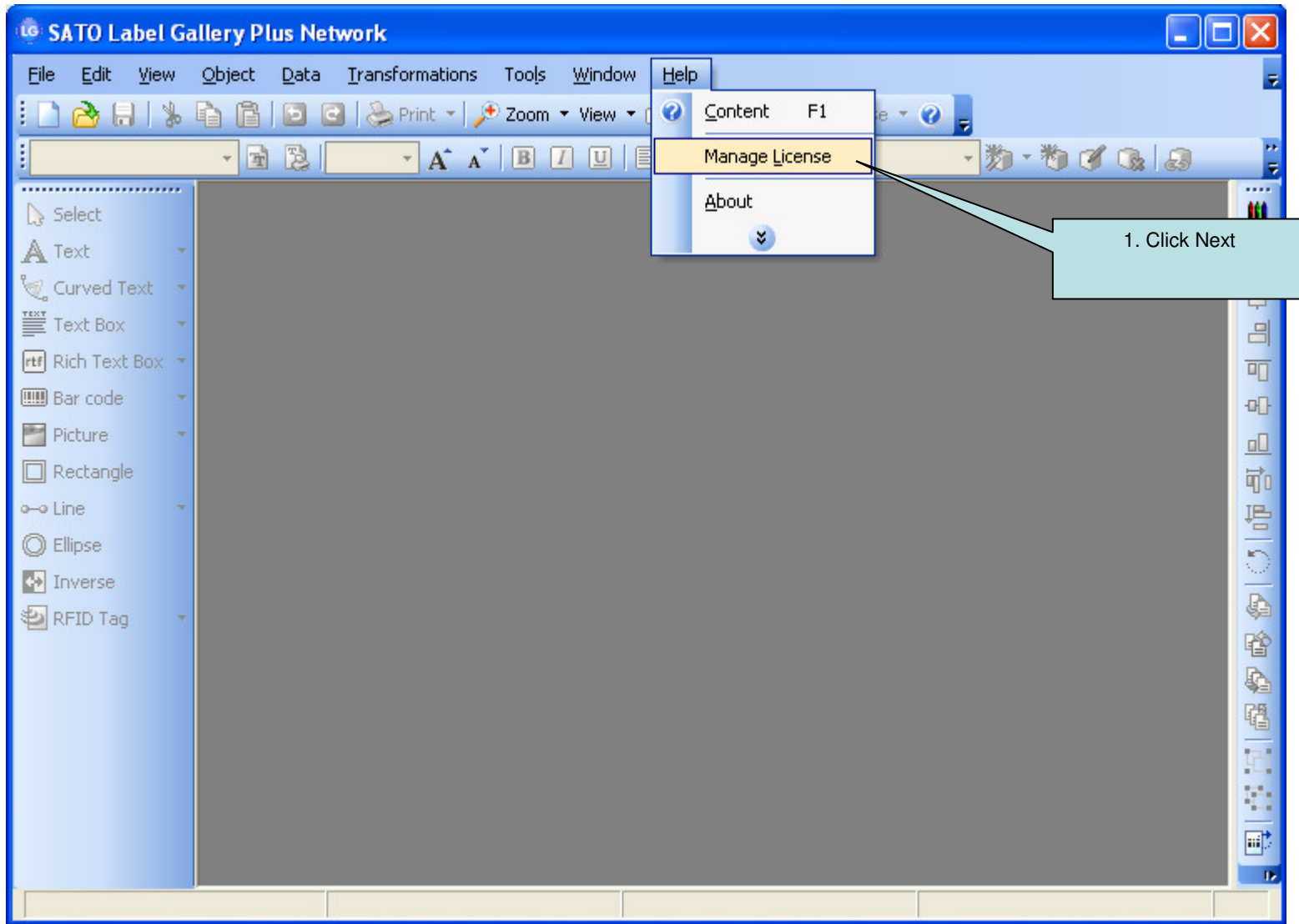


LG NW Upgrade – Add more users pack steps (on PC with Internet Access)



LG NW Upgrade – Add more users pack steps (on PC with Internet Access)

Manage license

License information
Network license information

Network license information:

Name	Value
Product:	LabelGallery
License Level:	Network
License Type:	Network license
Key Number:	T5C56-BZD35-7PKW5-9QDJK-SRVMP
Version:	3.x
Number of Licenses:	5
Off-line Mode	Disabled

Manage current network license

Cancel < Back Next > Finish

1. Check the Checkbox

Currently, you have 5 users license

LG NW Upgrade – Add more users pack steps (on PC with Internet Access)

Manage license

License information
Network license information

Network license information:

Name	Value
Product:	LabelGallery
License Level:	Network
License Type:	Network license
Key Number:	T5C56-BZD35-PPKW5-9QDJK-SRVMP
Version:	3.x
Number of Licenses:	5
Off-line Mode	Disabled

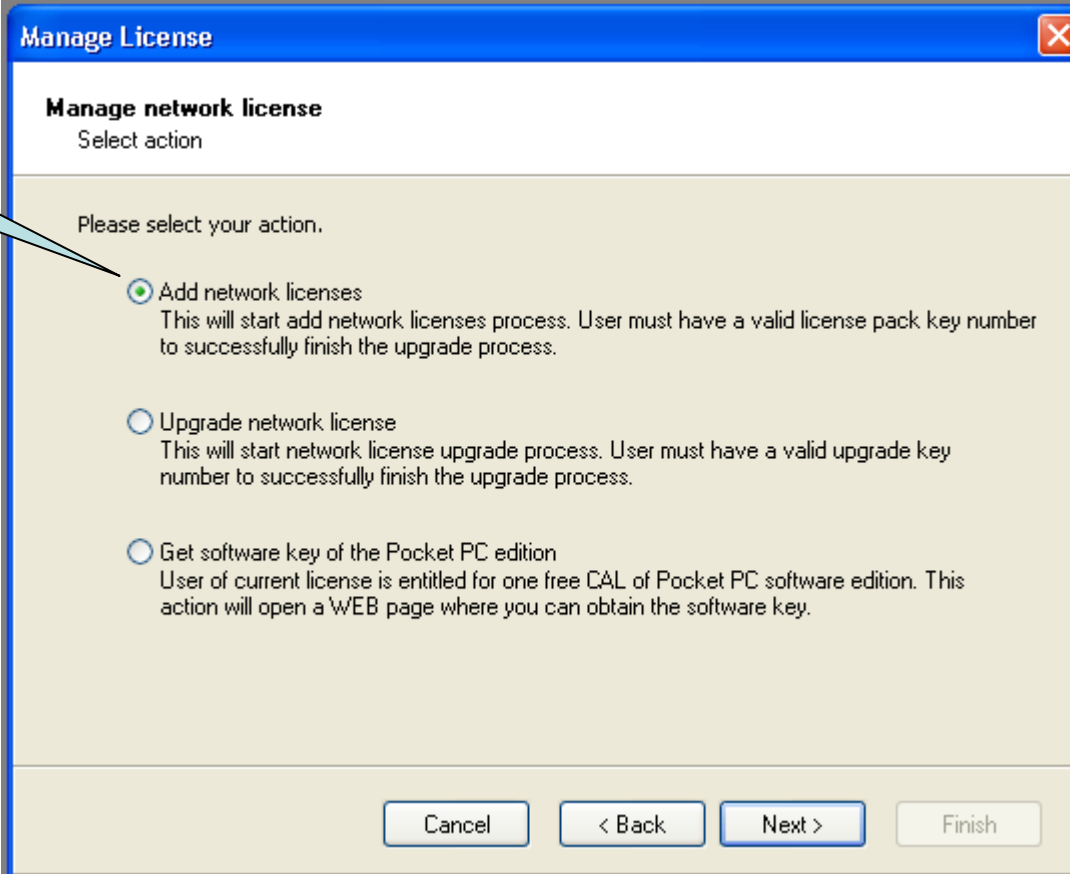
If you would like to manage the current network license, the wizard will assist you with the license management process.

Manage current network license

1. Click Next

LG NW Upgrade – Add more users pack steps (on PC with Internet Access)

1. Select add network licenses



The screenshot shows a 'Manage License' dialog box with a blue title bar and a close button in the top right corner. The main content area is titled 'Manage network license' and contains the text 'Select action'. Below this, it says 'Please select your action.' and lists three radio button options. The first option, 'Add network licenses', is selected and has a green dot next to it. The second option is 'Upgrade network license' and the third is 'Get software key of the Pocket PC edition'. At the bottom of the dialog, there are four buttons: 'Cancel', '< Back', 'Next >', and 'Finish'.

Manage License

Manage network license
Select action

Please select your action.

- Add network licenses
This will start add network licenses process. User must have a valid license pack key number to successfully finish the upgrade process.
- Upgrade network license
This will start network license upgrade process. User must have a valid upgrade key number to successfully finish the upgrade process.
- Get software key of the Pocket PC edition
User of current license is entitled for one free CAL of Pocket PC software edition. This action will open a WEB page where you can obtain the software key.

Cancel < Back Next > Finish

LG NW Upgrade – Add more users pack steps (on PC with Internet Access)

1. Input the Upgrade Key Number for more users license pack

Manage License [Close]

License Pack Key Number
Enter your license pack Key Number

Please enter license pack software key number and license pack activation code.

Network Software Key Number
XXXXX-XXXXX-XXXXX-XXXXX-XXXXX

License Pack Key Number
XXXXX W4VWF XXXXX SQULY XXXXX

Registration Number
MX3C3 XXXXX 54HBA XXXXX SN49Z

Activation Code
[][][][][]

If your computer is connected to the internet, you can select the automatic activation link.

Activation Code can also be acquired through the publisher's Activation Web page.

Automatic activation: [Connect to the Activation server](#)

Web page activation: <http://www.satoworldwide.com/LG/Req/LGPackActivation.htm>

Cancel < Back Next > Finish

LG NW Upgrade – Add more users pack steps (on PC with Internet Access)

Manage License [Close]

License Pack Key Number
Enter your license pack Key Number

Please enter license pack software key number and license pack activation code.

Network Software Key Number

License Pack Key Number

Registration Number

Activation Code

Automatic activation: [Connect to the Activation server](#)

Web page activation: <http://www.satoworldwide.com/LG/Req/LGPackActivation.htm>

Buttons: Cancel < Back Next > Finish

If your computer is connected to the internet, you can select the automatic activation link.

Activation Code can also be acquired through the Activation Web page.

1. Click on this link as it will provide the Activation code automatically

LG NW Upgrade – Add more users pack steps (on PC with Internet Access)

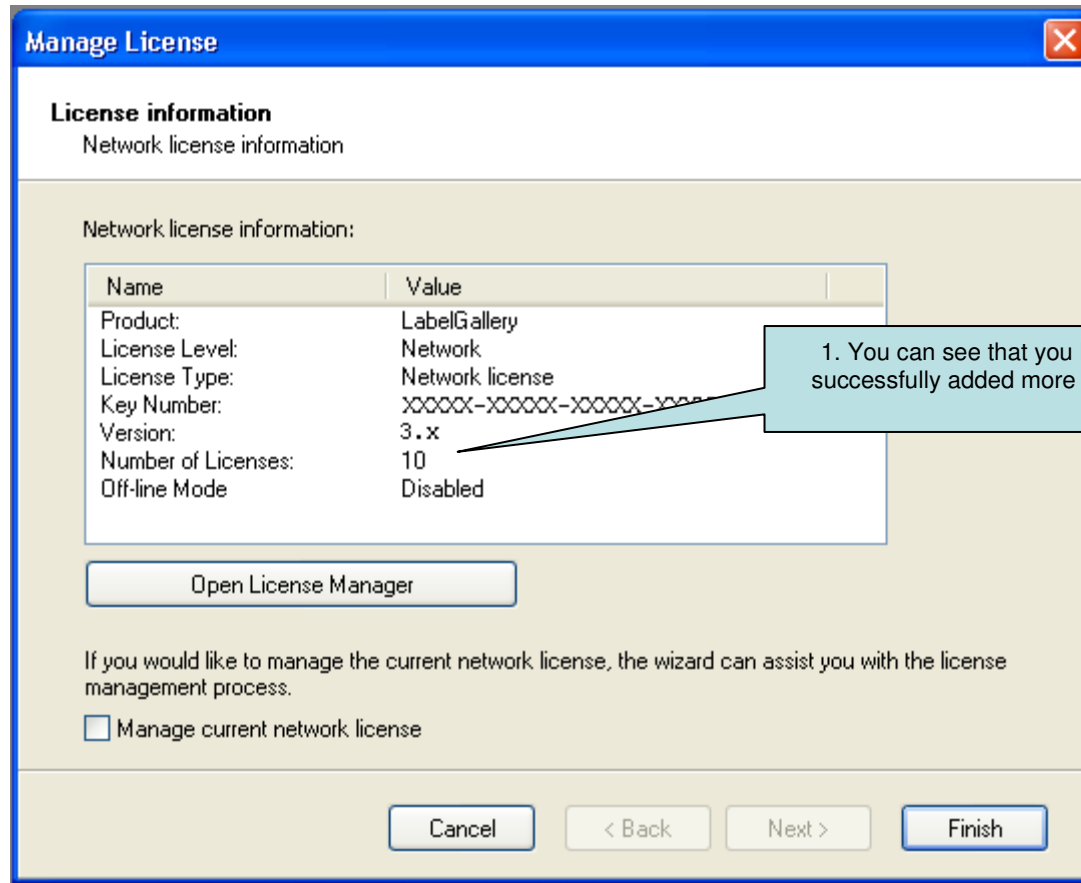
The image shows a 'Manage License' dialog box with the following fields and options:

- License Pack Key Number:** Enter your license pack Key Number
- Network Software Key Number:** A text box containing 'XXXXX-XXXXX-XXXXX-XXXXX-XXXXX'. To its right is the text: 'If your computer is connected to the internet, you can use automatic activation.' Below this is a checkbox labeled 'Use automatic activation'.
- License Pack Key:** A text box containing 'XXXXX'.
- Registration Number:** Two text boxes containing 'MX3C3' and 'NT'.
- Activation Code:** Five text boxes containing 'XXXXX', 'G4M2A', 'MUUJL', 'XXXXX', and 'XXXXX'.
- Automatic activation:** A checkbox with the label 'Connect to the Activation server'.
- Web page activation:** A checkbox with the label 'http://www.satoworldwide.com/LG/Req/LGPackActivation.htm'.
- Buttons:** 'Cancel', '< Back', 'Next >', and 'Finish'.

An 'Upgrade completed' dialog box is overlaid on the main window, containing the text: 'Upgrade completed successfully. Product is now ready for use.' and an 'OK' button.

A callout box points to the 'OK' button of the 'Upgrade completed' dialog with the text: '1. Successfully Activated. Click OK'.

LG NW Upgrade – Add more users pack steps (on PC with Internet Access)



END