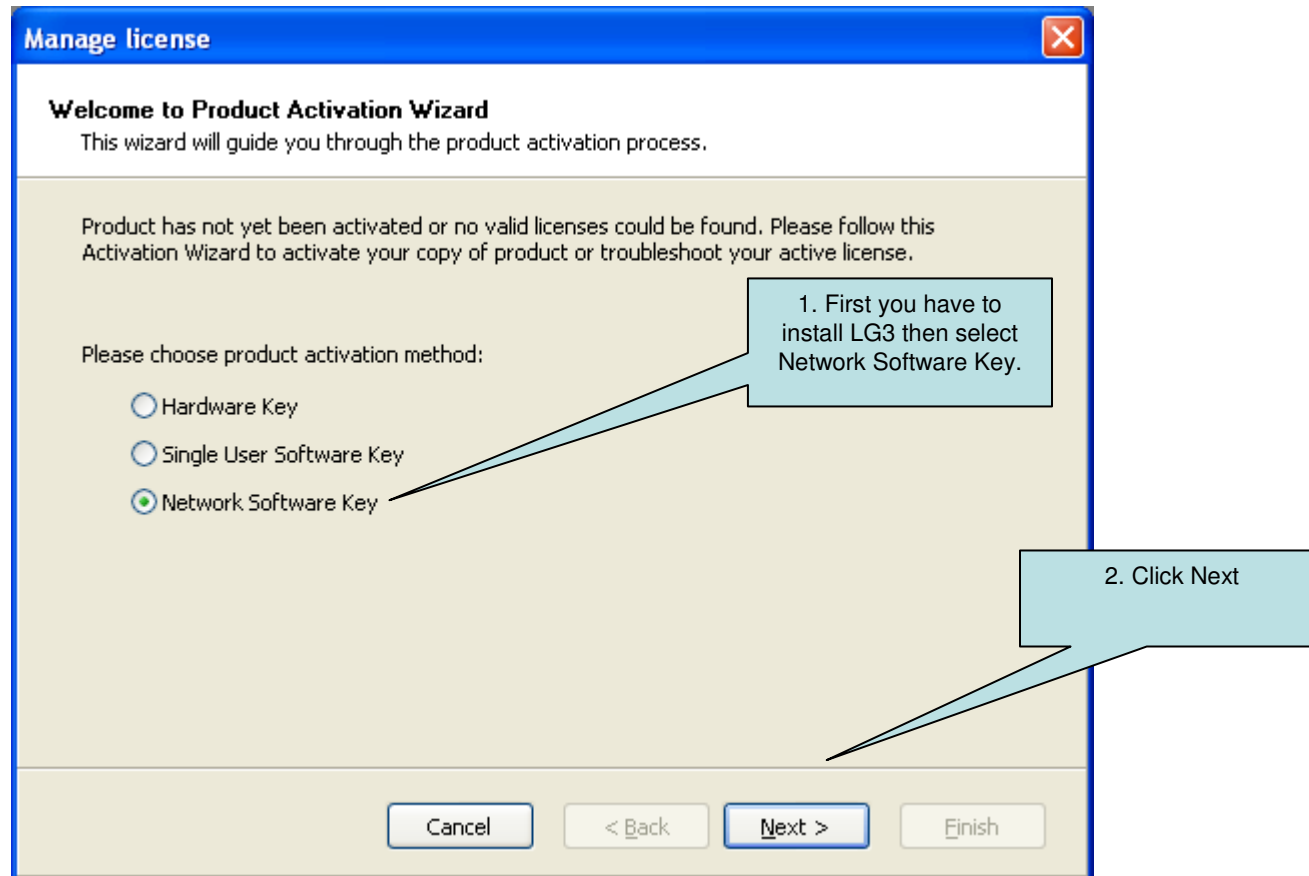




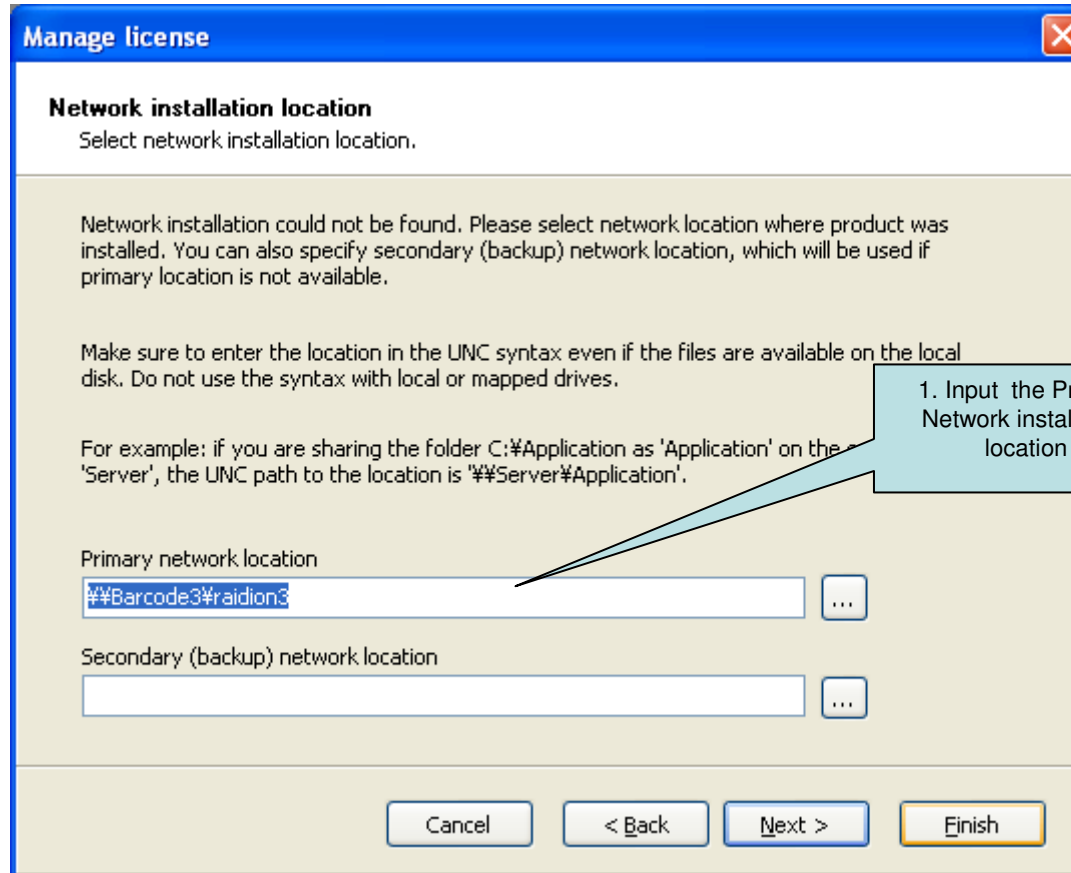
From **LG1/LG2 NW** to **LG3 NW** Upgrade Steps (on PC without Internet Access)



Note: If you can't find this screen, click on Help, then Manage License at the Menu



From **LG1/LG2 NW** to **LG3 NW** Upgrade Steps (on PC without Internet Access)



Manage license

Network installation location
Select network installation location.

Network installation could not be found. Please select network location where product was installed. You can also specify secondary (backup) network location, which will be used if primary location is not available.

Make sure to enter the location in the UNC syntax even if the files are available on the local disk. Do not use the syntax with local or mapped drives.

For example: if you are sharing the folder C:\Application as 'Application' on the 'Server', the UNC path to the location is '\\Server\Application'.

Primary network location
 ...

Secondary (backup) network location
 ...

Buttons: Cancel, < Back, Next >, Finish

1. Input the Primary Network installation location



From **LG1/LG2 NW** to **LG3 NW** Upgrade Steps (on PC without Internet Access)

Manage license

User Information
Enter user information.

Please enter your information. Note that fields marked with * are required.

Name *

Company *

Address Line 1

Address Line 2

Zip or Postal Code City

Country *

E-mail *

Key Number - - - - *

1. Input the LG3 NW upgrade license#

2. Click Next

From **LG1/LG2 NW** to **LG3 NW** Upgrade Steps (on PC without Internet Access)



Manage license

Old Key Number
Enter Old Key Number

Please enter old key number and upgrade activation code. Press the save button to save the activation data into file by pressing button save.

Old Key Number

Upgrade Key Number

Registration Number

Activation Code

Automatic activation: [Connect to the Activation server](#)

Web page activation: http://www.satoworldwide.com/labelgallery/upgrade_activation_index.htm

1. Input **LG1 (12 chars)** or **LG2 (25 chars)** NW license key as the Old Key Number

2. Copy this link to go to the PC with internet access to obtain the Activation code

http://www.satoworldwide.com/labelgallery/lg3/upgrade_activation_index.htm

From **LG1/LG2 NW** to **LG3 NW** Upgrade Steps (on PC without Internet Access)



SATO International - Network Registration - Windows Internet Explorer

http://www.satoworldwide.com/labelgallery/lg3/upgrade_activation_index.htm

SATO International - Network Registration

SATO
DCS & Labelling Worldwide

Software Upgrade Activation

Welcome to the Label Gallery activation site. Please copy the data from your Label Gallery activation dialog box into the fields below. Then press the ACTIVATE button.

Old Key Number: 0350-XXXX-3131 *

Upgrade Key Number: TCCLC - XXXXX - D7LG2 - XXXXX - 5WA9P *

Registration Number: 4ZHTA - XXXXX - 94UJ2 - XXXXX - JYTWR *

Name: Nancy Ho

Company: _____

Address 1: _____

Address 2: _____

Zip: _____ City: _____

Country: Singapore

E-mail: nancyho@sato-int.com *

* - required

LGUpgActivation.aspx Internet 100%

1. Please input the license numbers that you have written down

2. Click Activate

From **LG1/LG2 NW** to **LG3 NW** Upgrade Steps (on PC without Internet Access)



SATO International - Network Registration - Windows Internet Explorer

http://www.satoworldwide.com/labelgallery/lg3/upgrade_activation_index.htm

File Edit View Favorites Tools Help

SATO International - Network Registration

SATO
DCS & Labelling Worldwide

Software Upgrade Activation

The activation code was successfully generated.
To finish the activation procedure, enter Activation Code to the Label Gallery Activation dialog box.

Activation Code: 9KBCS-XXXX-5SA8J-XXXX-45A6H

The e-mail with Activation Code was successfully sent to address you have provided.

Copy down the Activation Code

Done Internet 100%



From **LG1/LG2 NW** to **LG3 NW** Upgrade Steps (on PC without Internet Access)

Manage license

Old Key Number
Enter Old Key Number

Please enter old key number and upgrade activation code. You can save activation data into file by pressing button save.

Old Key Number
0350-XXXX-3131

Upgrade Key Number
TCCLC XXXXX D7LG2 XXXXX 5WA9P

Registration Number
4ZHTA XXXXX 94UJ2 XXXXX JYWR

Activation Code
9KBCS XXXXX 55A8J XXXXX 45A6H

If your computer is connected to the internet, you can activate the automatic activation.

Activation code can also be acquired through the publisher's Activation Web page.

Automatic activation: [Connect to the Activation server](#)

Web page activation: http://www.satoworldwide.com/labelgallery/upgrade/activation_in

Save data Cancel < Back **Next >** Finish

1. Input Activation Code that have obtained from the previous page

2. Click Next

From **LG1/LG2 NW** to **LG3 NW** Upgrade Steps (on PC without Internet Access)



Manage license

Old Key Number
Enter Old Key Number

Please enter old key number and upgrade activation code. You can save activation data into the database by pressing button save.

Old Key Number
0350-XXXX-3131

Upgrade Key Number
TCCLC FZ

Registration Number
4ZH7A J0

Activation Code
9KBCS DC

If your computer is connected to the internet, you can select the automatic activation option. Also be sure to follow the publisher's instructions.

Automatic activation: [Connect to the Activation server](#)

Web page activation: http://www.satoworldwide.com/labelgallery/upgrade_activation_in

Save data Cancel < Back Next > Finish

Activation completed

Activation completed successfully. Product is now ready for use.

OK

You have successfully upgraded to LG3 NW



From **LG1/LG2 NW** to **LG3 NW** Upgrade Steps (on PC without Internet Access)

Manage license

License information
Network license information

Network license information:

Name	Value
Product:	LabelGallery
License Level:	Network Upgrade
License Type:	Network license
Key Number:	TCCLC-XXXXX-D7LG2-XXXXX-5WA9P
Version:	3.x
Number of Licenses:	10
Off-line Mode	Disabled

If you would like to manage the current network license, the wizard will assist you with the license management process.

Manage current network license

You are able to confirm the version under Manage License



The End